



# CLAMPED PIPE SHOE EME-CS1 (1/2" - 8")

Designed to eliminate field welding requirements for pipe supports.

**Ease of installation.** Easy to install due to bolt system.

**Fields of application:** Offshore and onshore piping, chemical and petrochemical industries, gas distribution systems, LPG and LNG plants.

## Materials

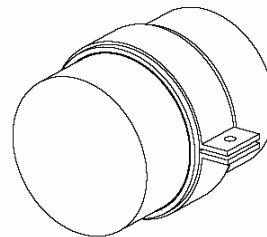
S235, S355, AISI 304, AISI 316.  
Other materials upon request (like 6MO etc)

## Carbon steel coating

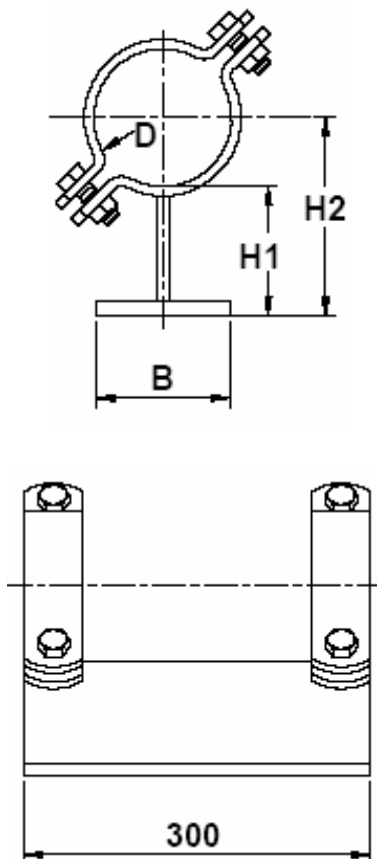
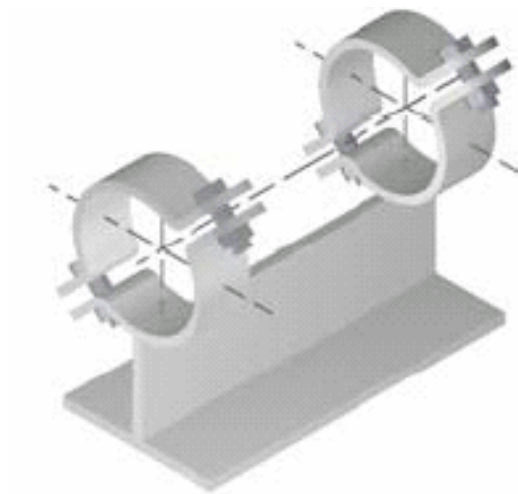
Zinc plated, Hot Dipped Galvanised or painted according to your specifications

**Optional Clamp Lining prevents paint failure and corrosion problems.**

Clamp Lining eliminates corrosion problems due to electrolytic action between dissimilar metals of pipe and pipe clamp. Dimension 'D' must be increased by 6 mm due to thickness of clamp lining.



Please see datasheets EME-CL series.



Part Number	NPS	'D'	'B'	'H1'	'H2'	F <sub>x</sub> (kN)	F <sub>y</sub> (kN)	F <sub>z</sub> (kN)
EME-CS1-015	1/2"	22	100	105	116	0.5	0.5	1.0
EME-CS1-020	3/4"	27	100	105	118	0.6	0.6	1.2
EME-CS1-025	1"	34	100	105	122	0.8	0.8	1.5
EME-CS1-032	1-1/4"	43	100	105	126	0.9	0.9	1.8
EME-CS1-040	1-1/2"	49	100	105	129	1.0	1.0	2.0
EME-CS1-050	2"	61	100	106	136	1.8	1.8	3.5
EME-CS1-080	3"	89	100	106	150	2.3	2.1	4.7
EME-CS1-100	4"	115	100	108	165	5.1	5.1	10.2
EME-CS1-125	5"	140	100	108	178	5.8	5.8	11.5
EME-CS1-150	6"	169	100	108	192	6.4	6.4	12.9
EME-CS1-200	8"	220	100	108	218	7.4	7.4	14.8

Other sizes upon request

Dimensions in mm

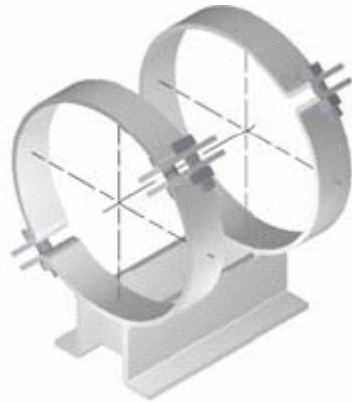
Load specifications for standard dimensions at 100 °C

Issue 2008



# CLAMPED PIPE SHOE EME-CS2 (10" - 24")

Designed to eliminate field welding requirements for pipe supports.



**Ease of installation.** Easy to install due to bolt system.

**Fields of application:** Offshore and onshore piping, chemical and petrochemical industries, gas distribution systems, LPG and LNG plants.

### Materials

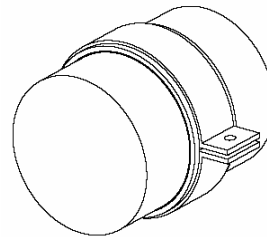
S235, S355, AISI 304, AISI 316.  
Other materials upon request (like 6MO etc)

### Carbon steel coating

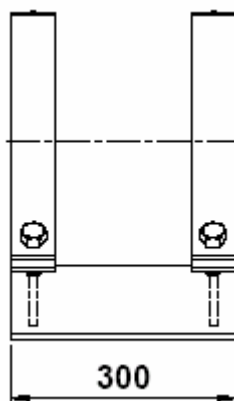
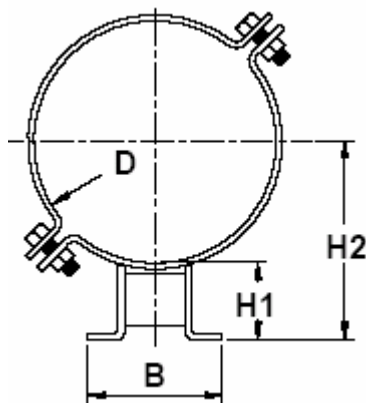
Zinc plated, Hot Dipped Galvanised or painted according to your specifications

**Optional Clamp Lining prevents paint failure and corrosion problems.**

Clamp Lining eliminates corrosion problems due to electrolytic action between dissimilar metals of pipe and pipe clamp. Dimension 'D' must be increased by 6 mm due to thickness of clamp lining.



Please see datasheets EME-CL series.



Part Number	NPS	'D'	'B'	'H1'	'H2'	F <sub>x</sub> (kN)	F <sub>y</sub> (kN)	F <sub>z</sub> (kN)
EME-CS2-250	10"	273	200	108	244	11.2	11.2	22.4
EME-CS2-300	12"	324	200	108	270	11.2	11.2	22.4
EME-CS2-350	14"	356	200	108	286	11.2	11.2	22.4
EME-CS2-400	16"	407	200	110	313	13.1	13.1	26.1
EME-CS2-500	20"	508	300	110	364	13.1	13.1	26.1
EME-CS2-600	24"	610	300	110	415	14.9	14.9	29.9

Other sizes upon request

Dimensions in mm

Load specifications for standard dimensions at 100 °C

Issue 2008



# CLAMPED PIPE SHOE EME-CS3 (3" - 32")

Designed to eliminate field welding requirements for pipe supports.

**Ease of installation.** Easy to install due to bolt system.

**Fields of application:** Offshore and onshore piping, chemical and petrochemical industries, gas distribution systems, LPG and LNG plants.

## Materials

S235, S355, AISI 304, AISI 316.  
Other materials upon request (like 6MO etc)

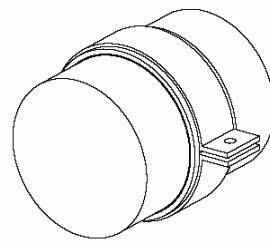
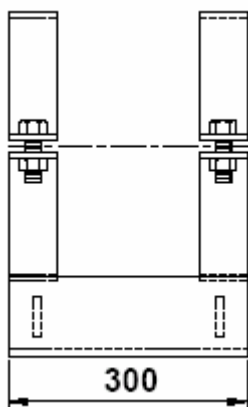
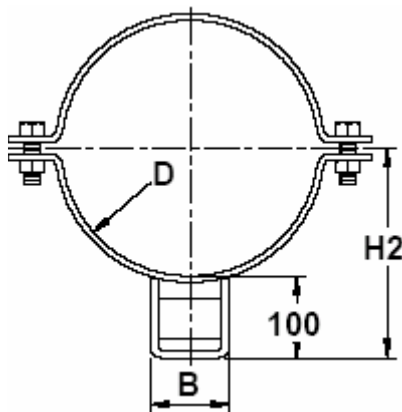
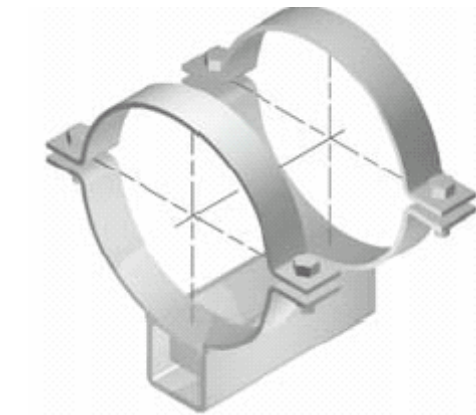
## Carbon steel coating

Zinc plated, Hot Dipped Galvanised or painted according to your specifications

**Optional Clamp Lining prevents paint failure and corrosion problems.**

Clamp Lining eliminates corrosion problems due to electrolytic action between dissimilar metals of pipe and pipe clamp. Dimension 'D' must be increased by 6 mm due to thickness of clamp lining.

Please see datasheets EME-CL series.



Part Number	NPS	'D'	'B'	'H2'	F <sub>x</sub> (kN)	F <sub>y</sub> (kN)	F <sub>z</sub> (kN)
EME-CS3-080	3"	89	80	144	2.4	2.4	4.8
EME-CS3-100	4"	115	80	157	5.3	5.3	10.7
EME-CS3-150	6"	169	100	184	6.7	6.7	13.4
EME-CS3-200	8"	220	100	210	7.7	7.7	15.4
EME-CS3-250	10"	273	100	236	10.0	10.0	20.0
EME-CS3-300	12"	324	100	262	10.0	10.0	20.0
EME-CS3-350	14"	356	100	278	10.0	10.0	20.0
EME-CS3-400	16"	407	200	303	8.0	8.0	16.0
EME-CS3-500	20"	508	200	354	8.0	8.0	16.0
EME-CS3-600	24"	610	200	405	8.0	8.0	16.0
EME-CS3-700	28"	712	200	456	8.0	8.0	16.0
EME-CS3-800	32"	813	200	506	8.0	8.0	16.0

Other sizes upon request

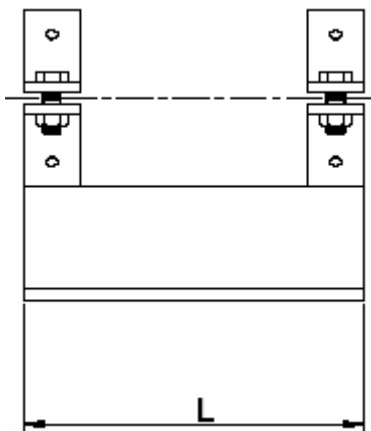
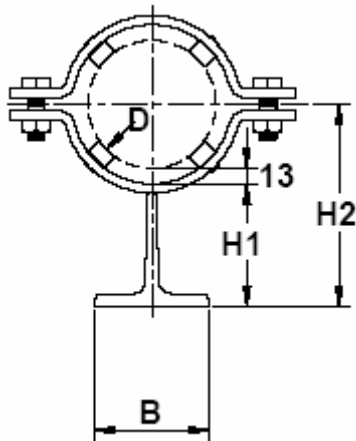
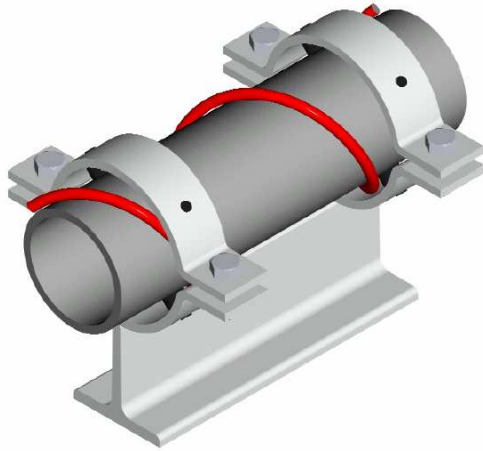
Dimensions in mm

Load specifications for standard dimensions at 100 °C

Issue 2008



# CLAMPED PIPE SHOE for electric trace heating EME-CS4 (1" - 6")



**Designed to obtain extremely low energy loss.** By means of a through heat transmission between tubing and support construction, low energy loss is obtained. The cylindrical shims are made from PA6 and care of an all-round clearance of tubing and enclosing tube clamp.

**Maximum temperature:** Based upon standard shims PA6 the maximum temperature is set at 90 °C.

**Fields of application:** Electric trace heating.

### Materials

S235, S355, AISI 304, AISI 316.  
Other materials upon request (like 6MO etc)

### Carbon steel coating

Zinc plated, Hot Dipped Galvanised or painted according to your specifications

Part Number	NPS	'D'	'B'	'H1'	'H2'	Fx (kN)	Fy (kN)	Fz (kN)
EME-CS4-025	1"	34	60	79	96	0.3	0.3	0.7
EME-CS4-040	1-1/2"	49	60	79	103	0.4	0.4	0.8
EME-CS4-050	2"	61	60	79	109	0.5	0.5	0.9
EME-CS4-080	3"	89	60	81	125	0.9	0.9	1.7
EME-CS4-100	4"	115	60	81	147	1.0	1.0	1.9
EME-CS4-150	6"	169	60	81	165	2.0	2.0	4.0

Other sizes upon request

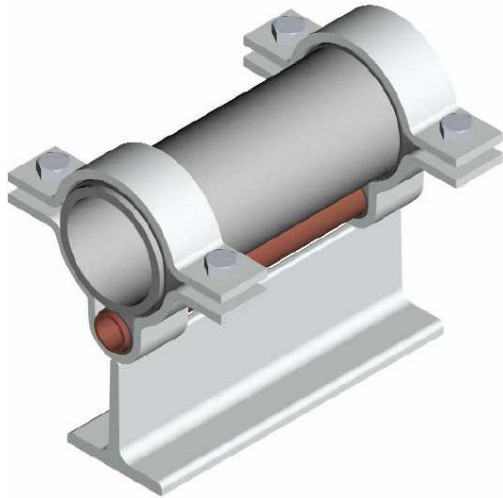
Dimensions in mm

Load specifications for standard dimensions at 100 °C



# CLAMPED PIPE SHOE for trace heating EME-CS5 (1" - 8")

Designed to retain simultaneously product tubing and accessory heating tube. The heat losses of the tube carriage base, can be minimised on requirement with the help of clamp insertions..



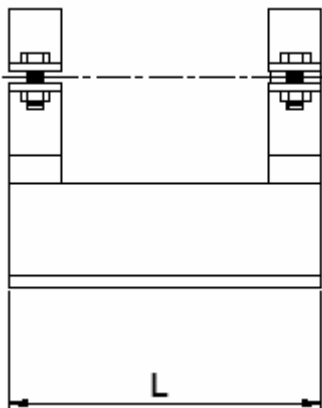
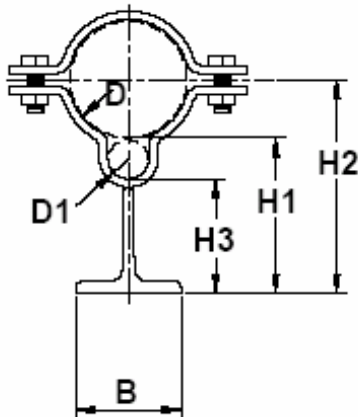
**Fields of application:** Trace heating.

## Materials

S235, S355, AISI 304, AISI 316.  
Other materials upon request (like 6MO etc)

## Carbon steel coating

Zinc plated, Hot Dipped Galvanised or painted according to your specifications



Part Number	NPS	'D'	'D1'	'B'	'L'	'H1'	'H2'	'H3'
EME-CS4-025	1"	34	26	60	300	91	102	65
EME-CS4-032	1-1/4"	43	26	60	300	91	103	65
EME-CS4-040	1-1/2"	49	26	60	300	91	108	65
EME-CS4-050	2"	61	40	60	300	105	129	65
EME-CS4-065	2-1/2"	77	40	60	300	106	136	66
EME-CS4-080	3"	89	40	60	300	106	144	66
EME-CS4-100	4"	115	40	60	300	106	150	66
EME-CS4-150	6"	169	40	60	300	108	192	68
EME-CS4-200	8"	220	40	60	300	108	203	68

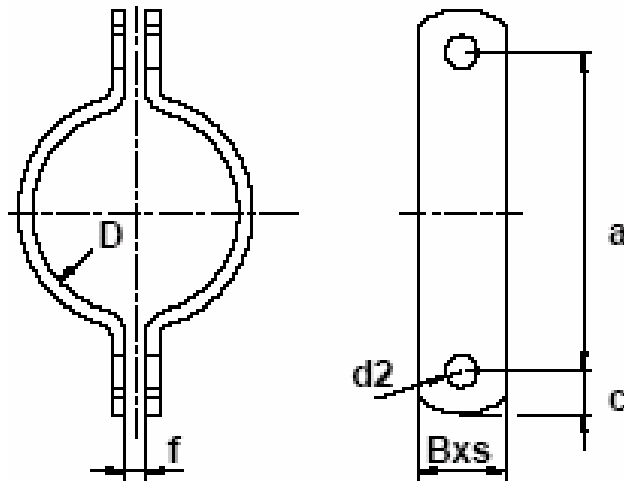
Part Number	Fx (kN)	Fy (kN)	Fz (kN)
EME-CS4-025	0.5	0.5	1.0
EME-CS4-032	0.6	0.6	1.1
EME-CS4-040	0.7	0.7	1.3
EME-CS4-050	0.8	0.8	1.6
EME-CS4-065	0.9	0.9	1.8
EME-CS4-080	1.5	1.5	3.0
EME-CS4-100	1.7	1.7	3.5
EME-CS4-150	4.1	4.1	8.1
EME-CS4-200	4.1	4.1	8.1

Other sizes upon request

Dimensions in mm

Load specifications for standard dimensions at 100 °C

Issue 2008



### Standard half pipe clamp.

#### Fields of application:

Offshore and onshore piping, shipbuilding, chemical and petrochemical industries, gas distribution systems, LPG and LNG plants.

**Material:** CS S235, CS S355, stainless steel AISI 304, AISI 316

**Coating:** self coloured, zinc plated, hot dipped galvanized.

Part Number	NPS	Ø D	B x s	a	c	d2	f	Weight (kg)
EME-PC1-15	½"	22	30x5	59	15	11,5	7	0,2
EME-PC1-20	¾"	27	30x5	66			7	0,2
EME-PC1-25	1"	34	30x5	72	15	11,5	7	0,3
EME-PC1-32	1 ¼"	43	30x5	82	15	11,5	7	0,3
EME-PC1-40	1-½"	49	30x5	88	15	11,5	7	0,3
EME-PC1-50	2"	61	40x6	108	18	14	9	0,6
EME-PC1-80	3"	89	40x6	136	18	14	9	0,8
EME-PC1-100	4"	115	50x8	178	24	18	11	1,6
EME-PC1-150	6"	169	50x8	232	24	18	11	2,1
EME-PC1-200	8"	220	50x8	284	24	18	11	2,6
EME-PC1-250	10"	273	60x8	348	30	23	14	3,9
EME-PC1-300	12"	324	60x8	398	30	23	14	4,5
EME-PC1-350	14"	356	60x8	432	30	23	14	5,1
EME-PC1-400	16"	407	70x10	498	36	27	18	8,5
EME-PC1-500	20"	508	70x10	600	36	27	18	10,0
EME-PC1-600	24"	610	90x15	742	36	33	18	25,2

Other sizes or thicknesses upon request