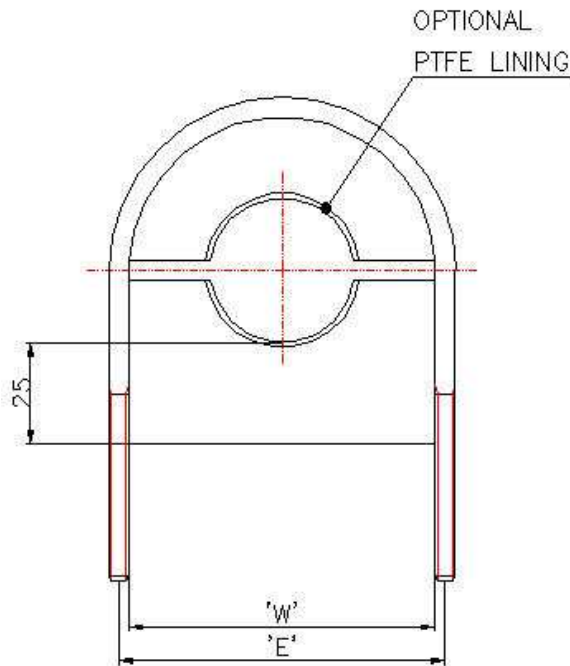




VIBRATION DAMPING PIPE BLOCK EME-PB & EME-PB-PT (+100 °C)



Prevents corrosion problems and reduces vibration. While clamping the pipe, a pipe block eliminates corrosion problems due to electrolytic action between dissimilar metals of pipe and pipe clamp. Furthermore the pipe block reduces vibration and noise.

Ease of installation. Easy to install due to bolt assembly and pipe block being moulded to pipe diameter.

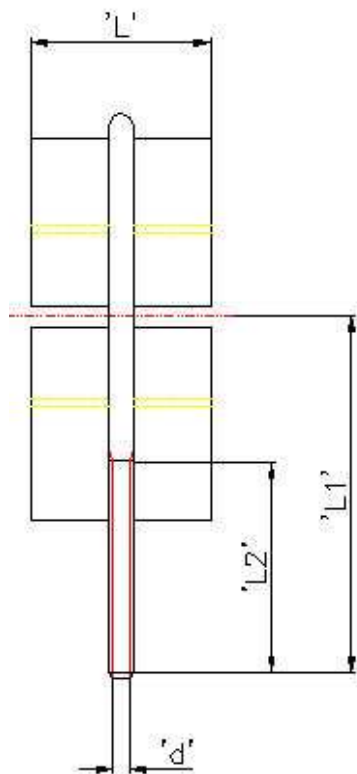
Fields of application: Offshore and onshore piping, shipbuilding, chemical and petrochemical industries, gas distribution systems, LPG and LNG plants.

Material Eslin 60 A/VD Flame Retardative suitable from -80 up to +100 °C. Also available in polypropylene with to be welded base plate (se datasheet EME-PBPP)

Grip & Guide.

Grip series with part number EME-PB

Guide series with part number EME-PB-PT; optional PTFE top layer provides possibility for guiding application.



Part Number	NPS	'W'	'L'	'E'	'L1'	'L2'	'd'
EME-PB-017				60	76	63	M10
EME-PB-PT-017	3/8"	48	25				
EME-PB-021				72	82	63	M10
EME-PB-PT-021	1/2"	60	25				
EME-PB-027				88	96	75	M12
EME-PB-PT027	3/4"	76	25				
EME-PB-034				88	96	75	M12
EME-PB-PT-034	1"	76	25				
EME-PB-043				103	102	75	M12
EME-PB-PT-043	1-1/4"	88	30				
EME-PB-049				103	102	75	M12
EME-PB-PT-049	1-1/2"	88	30				
EME-PB-061				155	127	75	M12
EME-PB-PT-061	2"	141	30				
EME-PB-089				155	127	75	M12
EME-PB-PT-089	3"	141	40				
EME-PB-115				188	155	95	M16
EME-PB-PT-115	4"	168	50				
EME-PB-168				238	180	95	M16
EME-PB-PT-168	6"	219	60				
EME-PB-219				296	210	95	M20
EME-PB-PT-219	8"	273	80				

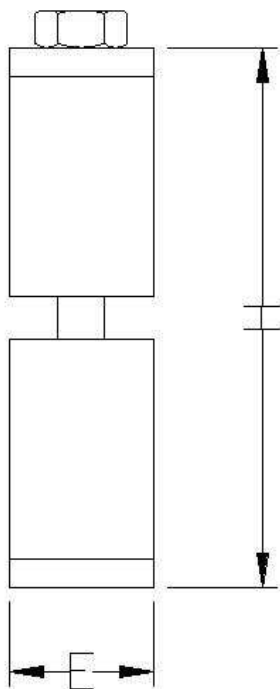
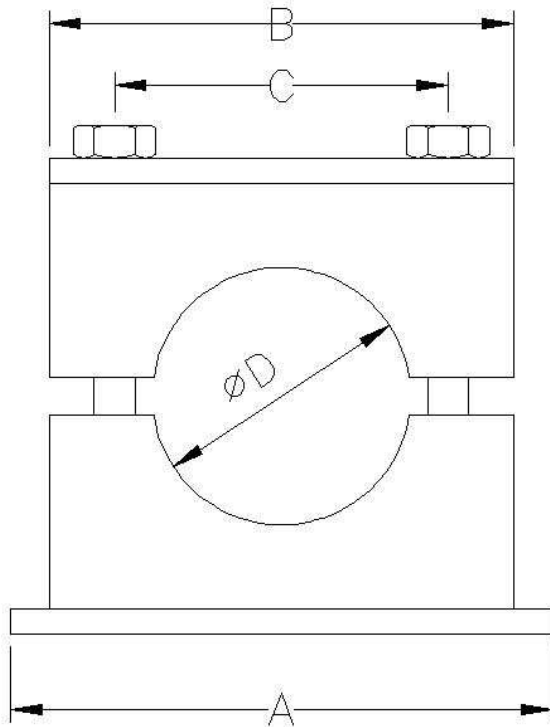
Other sizes or thicknesses upon request

Issue 2008



VIBRATION DAMPING PIPE BLOCK

EME-PBPP welded type



Prevents corrosion problems and reduces vibration. While clamping the pipe, a pipe block eliminates corrosion problems due to electrolytic action between dissimilar metals of pipe and pipe clamp. Furthermore the pipe block reduces vibration and noise.

Ease of installation. Easy to install due to bolt assembly and pipe block being moulded to pipe diameter.

Fields of application: Offshore and onshore piping, shipbuilding, chemical and petrochemical industries, gas distribution systems, LPG and LNG plants.

Materials

Carbon steel: S235

Clamp: Polypropylene (rubber available upon request)

Finish: zinc plated top plate; self coloured welding plate

Other material types upon request

Dimensions for tubes

TUBE [inch]	ØD	Dimensions (mm)					Part Number
		A	B	C	E	H	
1/4	6,4	42	34	20	30	33	EME-PBPP-064
1/2	12,7	48	40	26	30	39	EME-PBPP-127
3/4	19	55	48	33	30	41	EME-PBPP-190
1	25,4	55	48	33	30	41	EME-PBPP-254
1 1/4	32	62	57	40	30	48	EME-PBPP-320
1 1/2	38	74	68	52	30	64	EME-PBPP-380
1 3/4	44,5	88	86	66	30	72	EME-PBPP-445
2	50,8	88	86	66	30	72	EME-PBPP-508

Bolt size: M6

Dimensions for pipes

PIPE [inch]	ØD	Dimensions (mm)					Part Number
		A	B	C	E	H	
1/4	13,5	48	40	26	30	39	EME-PBPP-135
1/2	21,3	55	48	33	30	41	EME-PBPP-213
3/4	26,9	62	57	40	30	48	EME-PBPP-269
1	33,7	74	68	52	30	64	EME-PBPP-337
1 1/4	42,4	74	68	52	30	64	EME-PBPP-424
1 1/2	48,3	88	86	66	30	72	EME-PBPP-483

Bolt size: M6

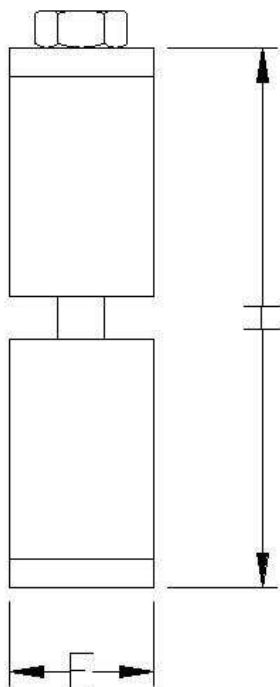
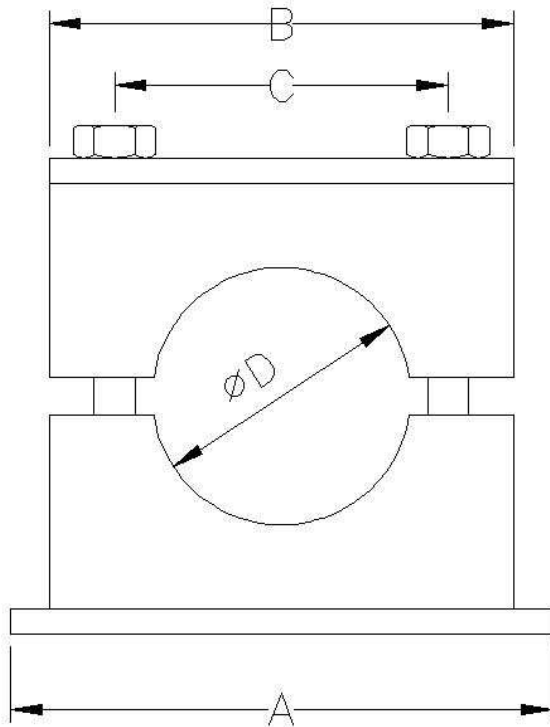
Other sizes or thicknesses upon request

Issue 2008



VIBRATION DAMPING PIPE BLOCK

EME-PBR welded type



Prevents corrosion problems and reduces vibration. While clamping the pipe, a pipe block eliminates corrosion problems due to electrolytic action between dissimilar metals of pipe and pipe clamp. Furthermore the pipe block reduces vibration and noise.

Ease of installation. Easy to install due to bolt assembly and pipe block being moulded to pipe diameter.

Fields of application: Offshore and onshore piping, shipbuilding, chemical and petrochemical industries, gas distribution systems, LPG and LNG plants.

Materials

Carbon steel: S235

Clamp: Rubber (Polypropylene available upon request)

Finish: zinc plated top plate; self coloured welding plate

Other material types upon request

Dimensions for tubes

TUBE [inch]	ØD	Dimensions (mm)					Part Number
		A	B	C	E	H	
1/4	6,4	42	34	20	30	33	EME-PBR-064
1/2	12,7	48	40	26	30	39	EME-PBR-127
3/4	19	55	48	33	30	41	EME-PBR-190
1	25,4	55	48	33	30	41	EME-PBR-254
1 1/4	32	62	57	40	30	48	EME-PBR-320
1 1/2	38	74	68	52	30	64	EME-PBR-380
1 3/4	44,5	88	86	66	30	72	EME-PBR-445
2	50,8	88	86	66	30	72	EME-PBR-508

Bolt size: M6

Dimensions for pipes

PIPE [inch]	ØD	Dimensions (mm)					Part Number
		A	B	C	E	H	
1/4	13,5	48	40	26	30	39	EME-PBR-135
1/2	21,3	55	48	33	30	41	EME-PBR-213
3/4	26,9	62	57	40	30	48	EME-PBR-269
1	33,7	74	68	52	30	64	EME-PBR-337
1 1/4	42,4	74	68	52	30	64	EME-PBR-424
1 1/2	48,3	88	86	66	30	72	EME-PBR-483

Bolt size: M6

Other sizes or thicknesses upon request

Issue 2008