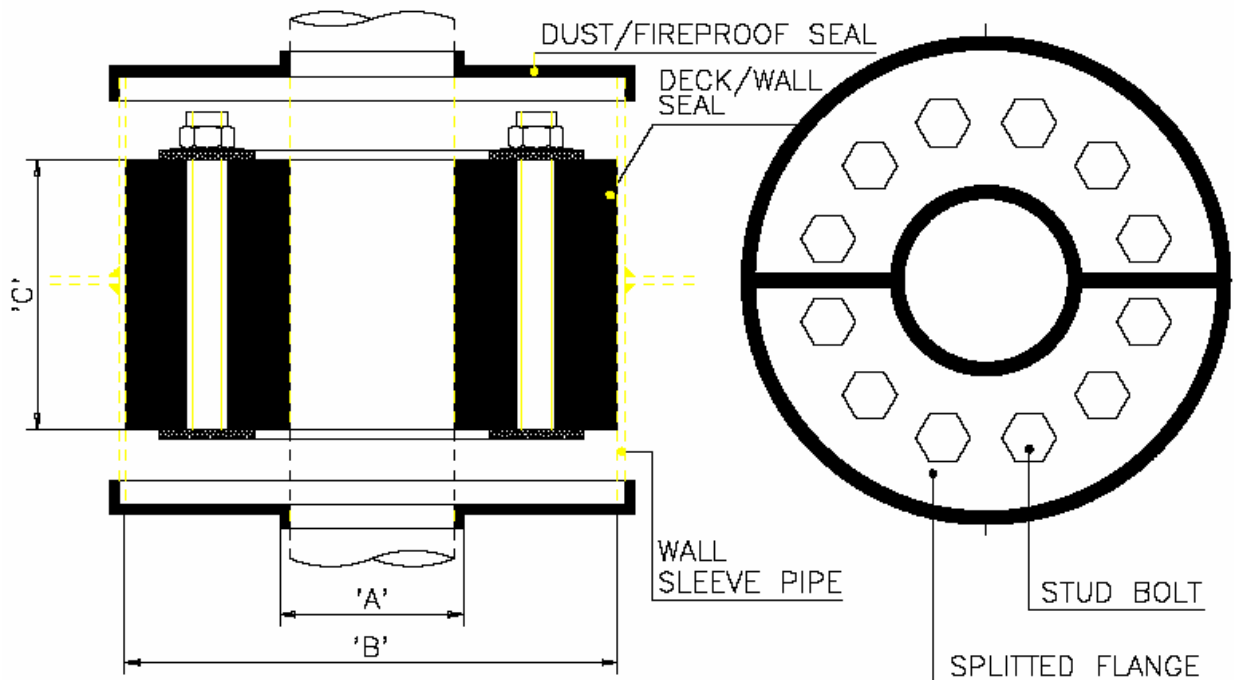


Prevents corrosion problems and compensates piping misalignment.

The Eslin seal is resistant to aging, water, ozone, UV-light and cold temperature. Besides compensating for piping misalignment, the Eslin seal also protects against galvanic corrosion by separating piping from metal casings. Furthermore the Eslin seal absorbs noise and vibration.



Dimensions

Part Number	NPS 'A'	Wall Sleeve Pipe 'B'	'C'	Bolt Size	Qty. Bolts
EME-DP-021	1/2"	3"	55	M8	6
EME-DP-027	3/4"	3"	55	M8	6
EME-DP-034	1"	3"	55	M8	6
EME-DP-043	1 1/4"	4"	55	M8	6
EME-DP-049	1 1/2"	4"	75	M8	6
EME-DP-061	2"	4"	75	M8	6
EME-DP-089	3"	6"	75	M8	6
EME-DP-115	4"	8"	75	M10	8
EME-DP-168	6"	10"	100	M10	12
EME-DP-219	8"	12"	100	M12	12
EME-DP-273	10"	14"	100	M12	16
EME-DP-324	12"	16"	125	M12	16

Other sizes or thicknesses upon request

Ease of installation.

Easy to install complete unit by bolting

Fields of application: Offshore and onshore piping, shipbuilding, chemical and petrochemical industries, gas distribution systems, LPG and LNG plants.

Material: Eslin 60 A/VD Flame Retardative suitable from -30 up to +100 °C. Also available silicone based seal (EME-DPS) up to 200 °C

Grip & Guide. The I/D of the seal can be optional supplied with a Teflon layer for guide application.

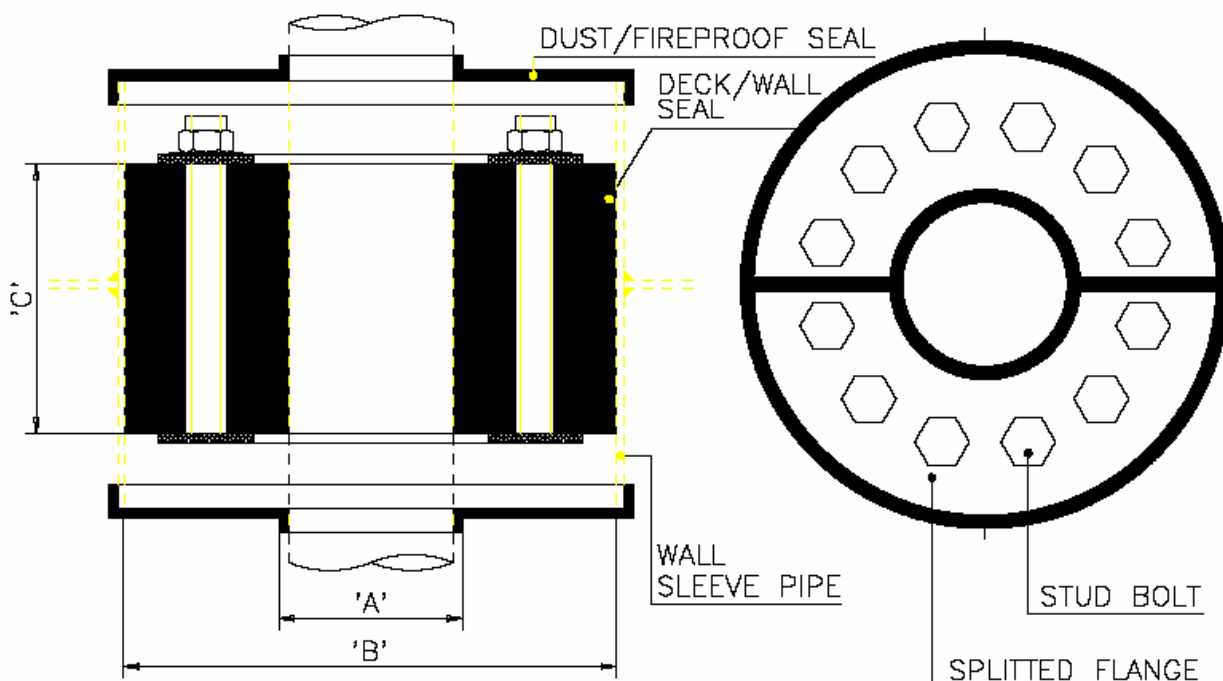
Dust & fireproof seal

Optional available single or double dust and/or fireproof seals.

Issue 2008

Prevents corrosion problems and compensates piping misalignment.

The silicone-based seal is resistant to aging, water, ozone and UV-light. Besides compensating for piping misalignment, the seal also protects against galvanic corrosion by separating piping from metal casings. Furthermore the seal absorbs noise and vibration.



Dimensions

Part Number	NPS 'A'	Wall Sleeve Pipe 'B'	'C'	Bolt Size	Qty. Bolts
EME-DPS-021	1/2"	3"	55	M8	6
EME-DPS-027	3/4"	3"	55	M8	6
EME-DPS-034	1"	3"	55	M8	6
EME-DPS-043	1 1/4"	4"	55	M8	6
EME-DPS-049	1 1/2"	4"	75	M8	6
EME-DPS-061	2"	4"	75	M8	6
EME-DPS-089	3"	6"	75	M8	6
EME-DPS-115	4"	8"	75	M10	8
EME-DPS-168	6"	10"	100	M10	12
EME-DPS-219	8"	12"	100	M12	12
EME-DPS-273	10"	14"	100	M12	16
EME-DPS-324	12"	16"	125	M12	16

Other sizes or thicknesses upon request

Ease of installation.

Easy to install complete unit by bolting

Fields of application: Offshore and onshore piping, shipbuilding, chemical and petrochemical industries, gas distribution systems, LPG and LNG plants.

Material: Eslin 60 A/VD Flame Retardative suitable from -30 up to +100 °C. Also available silicone based seal (EME-DPS) up to 200 °C

Grip & Guide. The I/D of the seal can be optional supplied with a Teflon layer for guide application.

Dust & fireproof seal

Optional available single or double dust and/or fireproof seals.

Issue 2008