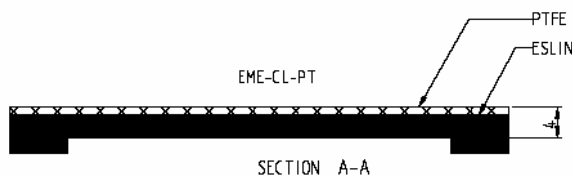
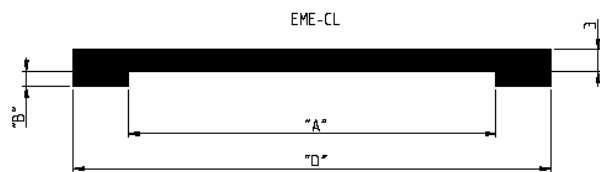
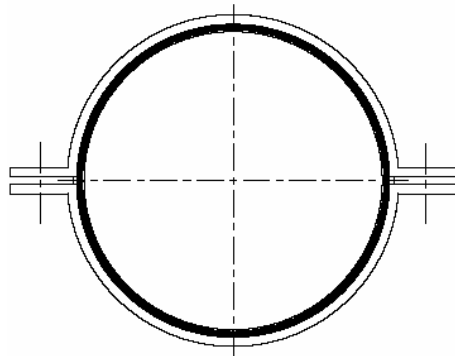
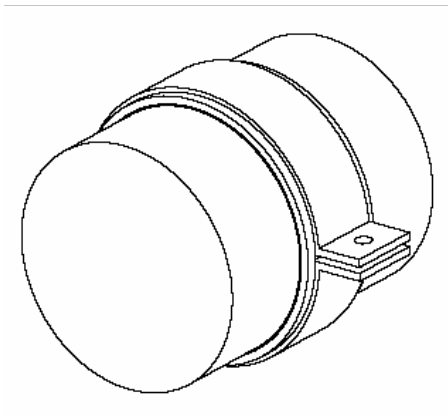




# ESLIN CLAMP LINING +100 °C EME-CL & EME-CL-PT



Other sizes or thicknesses upon request

Issue 2008

**Prevents corrosion problems.** Clamp Lining eliminates corrosion problems due to electrolytic action between dissimilar metals of pipe and pipe clamp. Also noise and vibration reduction, especially when supplied in thicker base thickness.

**Ease of installation.** Easy to install due to u-profile and flexible material.

**Fields of application:** Offshore & onshore piping, shipbuilding, chemical & petrochemical Industries, gas distribution systems, LPG and LNG plants.

## Materials:

Esline 60 A/VD Flame Retardative (-80 up to +100 °C)

*Other materials available:*

Neoprene70 (-40 up to +100 °C)

EPDM70 (-40 up to +120 °C)

Hypalon65 (-40 up to +120 °C)

Silicone150G (-20 up to +150 °C)

Silicone200G (-20 up to +200 °C)

Silicone350G (-20 up to +350 °C)

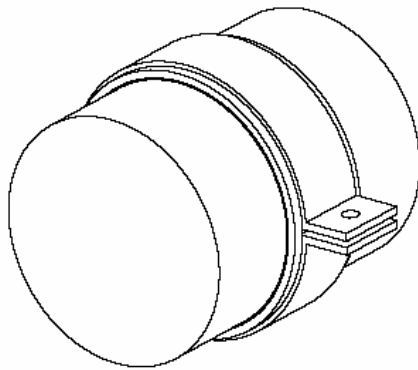
**Grip & Guide.** EME-CL is like a grip version, while EME-CL-PT has an low friction top layer of PTFE.

Part Number	'A'	'B'	'D'	Part Number
EME-CL-025	25	2	35	EME-CL-PT-025
EME-CL-030	30	2	40	EME-CL-PT-030
EME-CL-035	35	2	45	EME-CL-PT-035
EME-CL-040	40	2	50	EME-CL-PT-040
EME-CL-050	50	2	65	EME-CL-PT-050
EME-CL-060	60	2	75	EME-CL-PT-060
EME-CL-065	65	2	80	EME-CL-PT-065
EME-CL-070	70	2	85	EME-CL-PT-070
EME-CL-080	80	3	100	EME-CL-PT-080
EME-CL-090	90	3	110	EME-CL-PT-090
EME-CL-100	100	3	120	EME-CL-PT-100
EME-CL-110	110	3	130	EME-CL-PT-110
EME-CL-120	120	3	140	EME-CL-PT-120
EME-CL-125	125	3	145	EME-CL-PT-125
EME-CL-130	130	3	150	EME-CL-PT-130
EME-CL-140	140	3	160	EME-CL-PT-140
EME-CL-150	150	3	170	EME-CL-PT-150
EME-CL-200	200	3	220	EME-CL-PT-200
EME-CL-250	250	3	270	EME-CL-PT-250
EME-CL-300	300	3	320	EME-CL-PT-300
EME-CL-350	350	3	370	EME-CL-PT-350



# SILICON CLAMP LINING +150 °C

## EME-CL-HT-150G

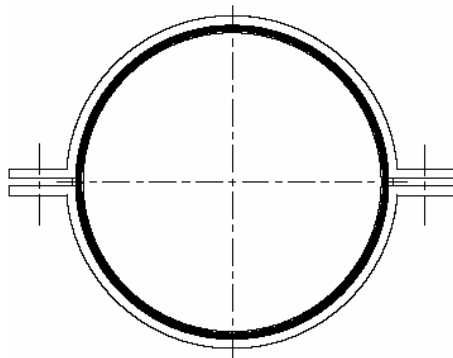


**Prevents paint failure and corrosion problems.** Clamp Lining eliminates corrosion problems due to electrolytic action between dissimilar metals of pipe and pipe clamp. Also noise and vibration reduction, especially when supplied in thicker base thickness.

**Ease of installation.** Easy to install due to u-profile and flexible material.

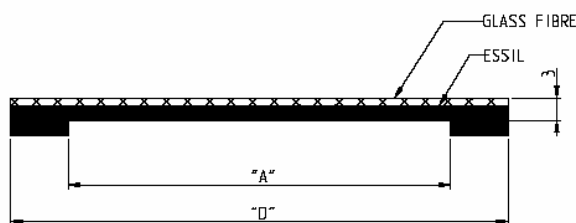
**Fields of Application:** Offshore and onshore piping, shipbuilding, chemical and petrochemical industries, gas distribution systems, LPG and LNG plants.

**Material:** Silicone rubber with glass fibre backing. Suitable up to +150 °C



### Glass fibre backing

Glass fibre backing provides extra tear strength



Part Number	'A'	'D'
EME-CL-HT150G-025	25	35
EME-CL-HT150G-030	30	40
EME-CL-HT150G-035	35	45
EME-CL-HT150G-040	40	50
EME-CL-HT150G-050	50	65
EME-CL-HT150G-060	60	75
EME-CL-HT150G-065	65	80
EME-CL-HT150G-070	70	85
EME-CL-HT150G-080	80	100
EME-CL-HT150G-090	90	110
EME-CL-HT150G-100	100	120
EME-CL-HT150G-110	110	130
EME-CL-HT150G-120	120	140
EME-CL-HT150G-125	125	145
EME-CL-HT150G-130	130	150
EME-CL-HT150G-140	140	160
EME-CL-HT150G-150	150	170
EME-CL-HT150G-200	200	220
EME-CL-HT150G-250	250	270
EME-CL-HT150G-300	300	320
EME-CL-HT150G-350	350	370

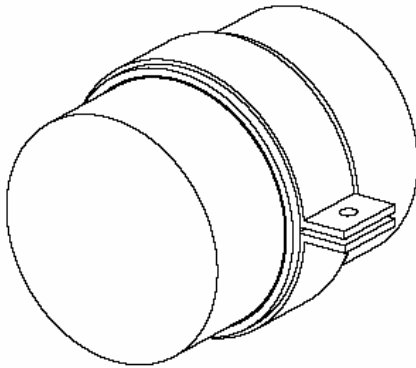
Other sizes or thicknesses upon request

Issue 2008



# PTFE/SILICON CLAMP LINING +150 °C

## EME-CL-HT150PT

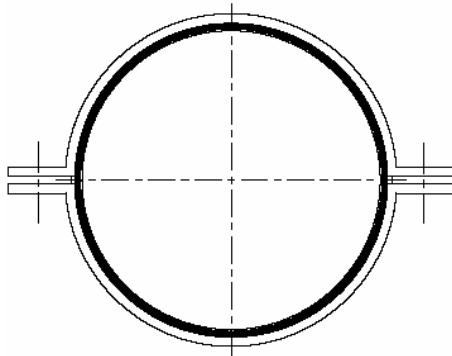


**Prevents paint failure and corrosion problems with extra PTFE low friction surface.** Clamp Lining eliminates corrosion problems due to electrolytic action between dissimilar metals of pipe and pipe clamp. Also noise and vibration reduction, especially when supplied in thicker base thickness.

**Ease of installation.** Easy to install due to u-profile and flexible material.

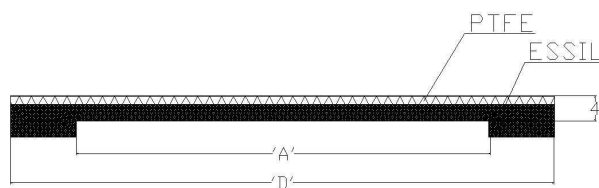
**Fields of Application:** Offshore and onshore piping, shipbuilding, chemical and petrochemical industries, gas distribution systems, LPG and LNG plants.

**Material:** Silicone rubber with PTFE top surface. Suitable up to +150 °C



### PTFE backing

PTFE fibre backing provides low friction slide surface



Part Number	'A'	'D'
EME-CL-HT150PT-025	25	35
EME-CL-HT150PT-030	30	40
EME-CL-HT150PT-035	35	45
EME-CL-HT150PT-040	40	50
EME-CL-HT150PT-050	50	65
EME-CL-HT150PT-060	60	75
EME-CL-HT150PT-065	65	80
EME-CL-HT150PT-070	70	85
EME-CL-HT150PT-080	80	100
EME-CL-HT150PT-090	90	110
EME-CL-HT150PT-100	100	120
EME-CL-HT150PT-110	110	130
EME-CL-HT150PT-120	120	140
EME-CL-HT150PT-125	125	145
EME-CL-HT150PT-130	130	150
EME-CL-HT150PT-140	140	160
EME-CL-HT150PT-150	150	170
EME-CL-HT150PT-200	200	220
EME-CL-HT150PT-250	250	270
EME-CL-HT150PT-300	300	320
EME-CL-HT150PT-350	350	370

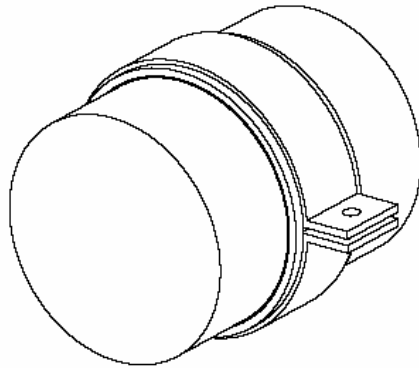
Base thickness is 4 mm. Other sizes or thicknesses upon request

Issue 2006B



# SILICON CLAMP LINING +200 °C

## EME-CL-HT-200G

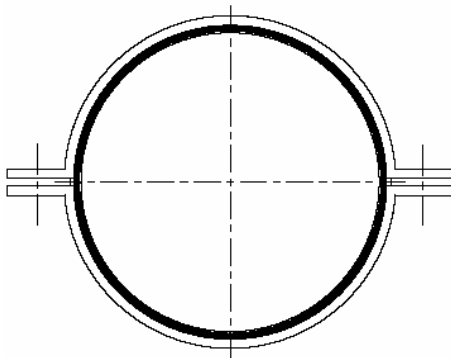


**Prevents paint failure and corrosion problems.** Clamp Lining eliminates corrosion problems due to electrolytic action between dissimilar metals of pipe and pipe clamp. Also noise and vibration reduction, especially when supplied in thicker base thickness.

**Ease of installation.** Easy to install due to u-profile and flexible material.

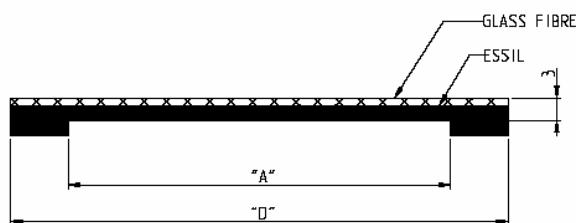
**Fields of Application:** Offshore and onshore piping, shipbuilding, chemical and petrochemical industries, gas distribution systems, LPG and LNG plants.

**Material:** Silicone rubber with glass fibre backing. Suitable up to +200 °C



### Glass fibre backing

Glass fibre backing provides extra tear strength



Part Number	'A'	'D'
EME-CL-HT200G-025	25	35
EME-CL-HT200G-030	30	40
EME-CL-HT200G-035	35	45
EME-CL-HT200G-040	40	50
EME-CL-HT200G-050	50	65
EME-CL-HT200G-060	60	75
EME-CL-HT200G-065	65	80
EME-CL-HT200G-070	70	85
EME-CL-HT200G-080	80	100
EME-CL-HT200G-090	90	110
EME-CL-HT200G-100	100	120
EME-CL-HT200G-110	110	130
EME-CL-HT200G-120	120	140
EME-CL-HT200G-125	125	145
EME-CL-HT200G-130	130	150
EME-CL-HT200G-140	140	160
EME-CL-HT200G-150	150	170
EME-CL-HT200G-200	200	220
EME-CL-HT200G-250	250	270
EME-CL-HT200G-300	300	320
EME-CL-HT200G-350	350	370

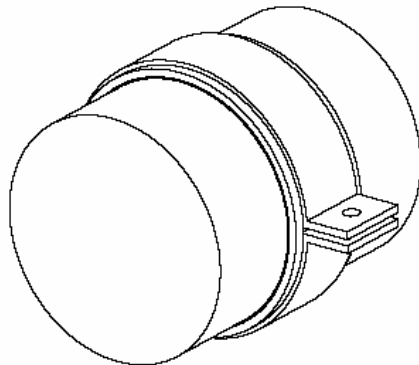
Other sizes or thicknesses upon request

Issue 2008



# SILICON CLAMP LINING +350 °C

## EME-CL-HT-350G

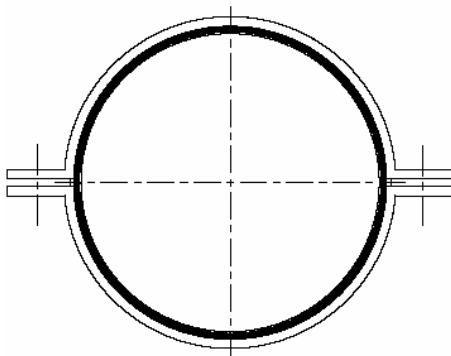


**Prevents paint failure and corrosion problems.** Clamp Lining eliminates corrosion problems due to electrolytic action between dissimilar metals of pipe and pipe clamp. Also noise and vibration reduction, especially when supplied in thicker base thickness.

**Ease of installation.** Easy to install due to u-profile and flexible material.

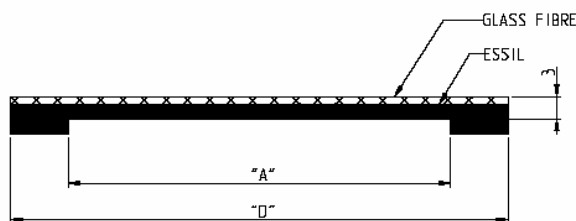
**Fields of Application:** Offshore and onshore piping, shipbuilding, chemical and petrochemical industries, gas distribution systems, LPG and LNG plants.

**Material:** Silicone rubber with glass fibre backing. Suitable up to +350 °C



### Glass fibre backing

Glass fibre backing provides extra tear strength



Part Number	'A'	'D'
EME-CL-HT350G-025	25	35
EME-CL-HT350G-030	30	40
EME-CL-HT350G-035	35	45
EME-CL-HT350G-040	40	50
EME-CL-HT350G-050	50	65
EME-CL-HT350G-060	60	75
EME-CL-HT350G-065	65	80
EME-CL-HT350G-070	70	85
EME-CL-HT350G-080	80	100
EME-CL-HT350G-090	90	110
EME-CL-HT350G-100	100	120
EME-CL-HT350G-110	110	130
EME-CL-HT350G-120	120	140
EME-CL-HT350G-125	125	145
EME-CL-HT350G-130	130	150
EME-CL-HT350G-140	140	160
EME-CL-HT350G-150	150	170
EME-CL-HT350G-200	200	220
EME-CL-HT350G-250	250	270
EME-CL-HT350G-300	300	320
EME-CL-HT350G-350	350	370

Other sizes or thicknesses upon request

Issue 2008



## Prevents corrosion problems

Riser Clamp Lining eliminates corrosion problems due to electrolytic action between dissimilar metals of pipe and pipe clamp. Also noise and vibration reduction, especially when supplied in thicker base thickness.

## Ease of installation

Lining can be vulcanized directly into the clamp at Esmat workshop or we can supply a pre-fab unit by vulcanizing the lining onto a welding plate, which can be welded on site.

## Configurations

- Ribbed lining
- Unprofiled lining
- Lining with top surface made from Teflon

## Material

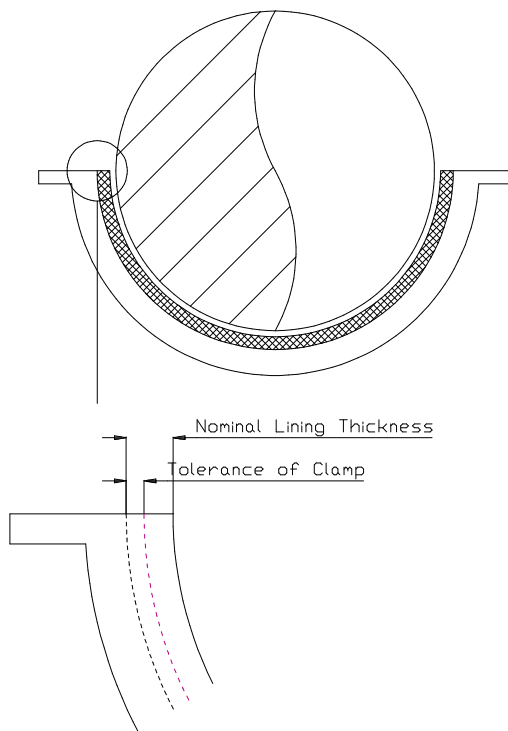
Eslin 60 A/VD Flame Retardative.  
Temperature range for riser lining application is -40 up to +100 °C

## Grip & Guide

By using a Teflon top surface for the lining, a guide application is possible.

## Tolerance

For large pipe sizes, the tolerance of the clamp could be a large percentage of the total lining thickness. This could result into an unbalanced load on the pre-fab lining unit. This problem is eliminated when the riser lining is vulcanized directly into the clamp at the Esmat workshop.





# WEEFSEL CLAMP LINER +450 °C

## EME-WCL

### Toepassingen

- warmteafdichting bij hoge temperaturen
- pijpisolatie
- voorkomen van corrosie tussen beugel en pijp

**Materiaal** : samengesteld weefsel op basis van o.a. glasweefsel

### Standaard afmetingen

rollengte : 50 meter  
rolbreedte : 40, 50, 75, 100 en 150 mm  
dikte : 3 mm

andere afmetingen op aanvraag

**Temperatuurbereik** : -75 ° C tot + 450 ° C

**Bestand tegen** : veel voorkomende olieën en chemicaliën

### Codering

EME-WCL-040  
EME-WCL-050  
EME-WCL-075  
EME-WCL-100  
EME-WCL-150

Ook beschikbaar: glasweefsel clamp liner met siliconen coating

Issue 2008