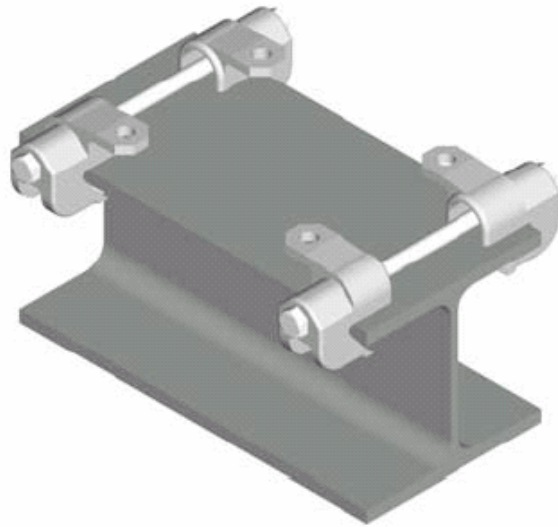




BEAM CLAMP SYSTEM for pipe shoe EME-BCS1 with lift-off safety device



Prevents lift-off of pipe shoe

Complete unit that prevents lift-off of pipe shoe from supporting beam.

Ease of installation

Clamping jaws fit a wide range of beam profiles and are easily installed by means of bolting.

Applicable beam profile

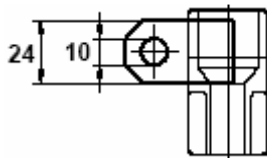
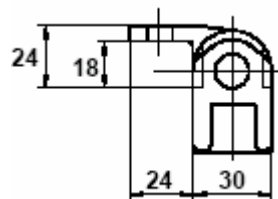
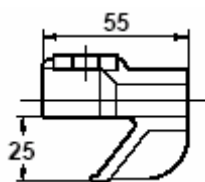
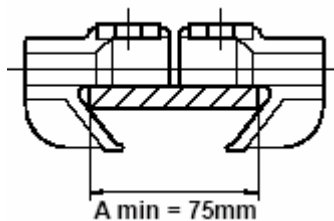
HEA 100 to HEA 300
HEB 100 to HEB 300
IPE 160 to IPE 600
T 80 to T 140

Temperature range

0 to 350 °C based upon coating hot dipped galvanised.

Material

Beam clamp is made from GS 52 (1.1191)



Dimensions

Part Number	Beam width	Fy (kN)	Fz (kN)	Thread	weight
<i>EME-BCS1-A</i>	80 - 120	± 4	-10	M12 x 200	1.0 kg
<i>EME-BCS1-B</i>	130 - 160	± 4	-10	M12 x 240	1.0 kg
<i>EME-BCS1-C</i>	170 - 200	± 4	-10	M12 x 280	1.0 kg
<i>EME-BCS1-D</i>	210 - 240	± 4	-10	M12 x 320	1.0 kg
<i>EME-BCS1-E</i>	250 - 300	± 4	-10	M12 x 380	1.0 kg

Other sizes upon request

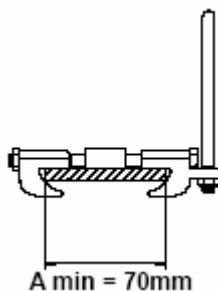
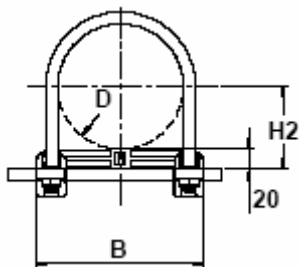
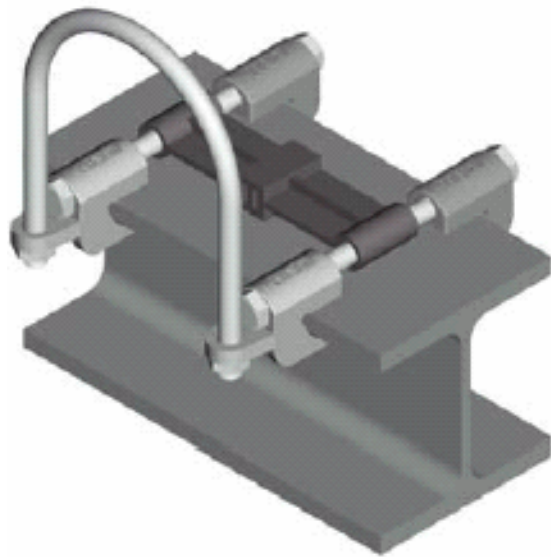
Thread length can also be modified to fit exactly your project beam width.

Base plate pipe shoe maximum 15 mm thickness

Issue 2008



BEAM CLAMP SYSTEM for anti-corrosion EME-BCS2



Prevents paint failure and corrosion problems.

A complete unit that eliminates corrosion problems between steel u-bolt and pipe as well as pipe and supporting beam. This will save your piping systems and extend lifetime. The u-bolt is rubber coated to prevent corrosion between the normally uncoated u-bolt and pipe.

Ease of installation

Clamping jaws fit a wide range of beam profiles and are easily installed by means of bolting.

Applicable beam profile

HEA 100 to HEA 400
HEB 100 to HEB 300
IPE 140 to IPE 600
T 70 to T 140

Temperature range

0 to 80 °C based upon rubber coating u-bolt.

Material & coating

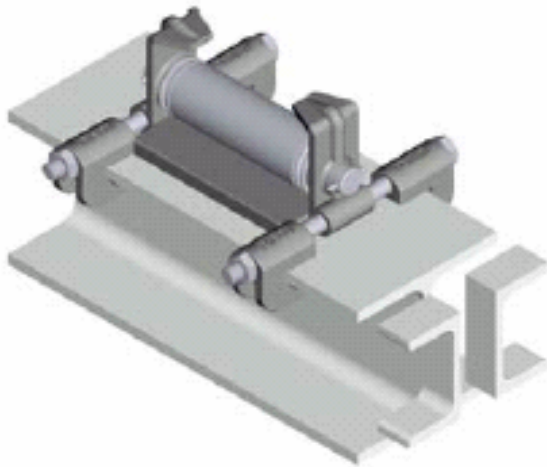
Beam clamp is made from GS 45
U-bolt is standard made from S235
Sliding shim is made from PA6
Carbon steel coating is hot dipped galvanised

Dimensions

Part Number	NPS	'B'	'H2'	Fx (kN)	Fy (kN)	Fz (kN)
EME-BCS2-27	3/4"	68	34	0.6	0.6	0.6
EME-BCS2-34	1/2"	76	37	0.5	0.5	0.8
EME-BCS2-43	1-1/4"	84	42	0.5	0.5	1.0
EME-BCS2-49	1-1/2"	90	45	0.4	0.4	1.1
EME-BCS2-61	2"	104	51	0.4	0.4	1.4
EME-BCS2-89	3"	134	65	0.3	0.3	2.0
EME-BCS2-115	4"	164	78	0.3	0.3	2.5

Threading: M12
Other sizes upon request

Issue 2008



Provides lowest reaction forces in pipeline system.

Axial movement of the pipe is realised by rolling movement and thus lowest running resistance. This unit combines clamping jaws and roller support. Furthermore it also provides a lift-off safety device for the pipe shoe.

Ease of installation

Clamping jaws fit a wide range of beam profiles and are easily installed by means of bolting.

Applicable beam profile

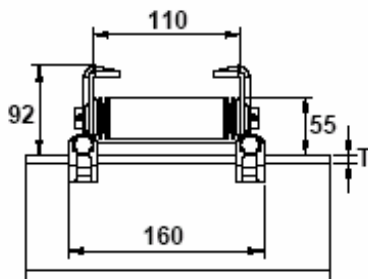
HEA 100 to HEA 400
HEB 100 to HEB 300
IPE 140 to IPE 600
T 100 to T 140

Temperature range

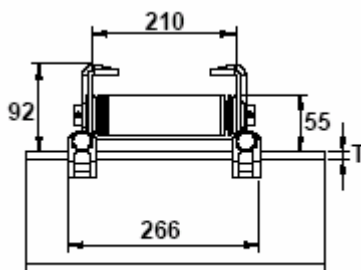
0 to 350 °C based upon hot dip galvanised coating.

Material & coating

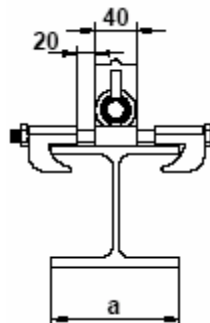
Beam clamp is made from GS 45



EME-BCS3-A



EME-BCS3-B



Dimensions

Part Number	Thread	Fy (kN)	Fz (kN)	Weight (kg)
EME-BCS3-A	M12	3.0	12.0	3.1
EME-BCS3-B	M12	3.0	12.0	4.5

Other sizes upon request