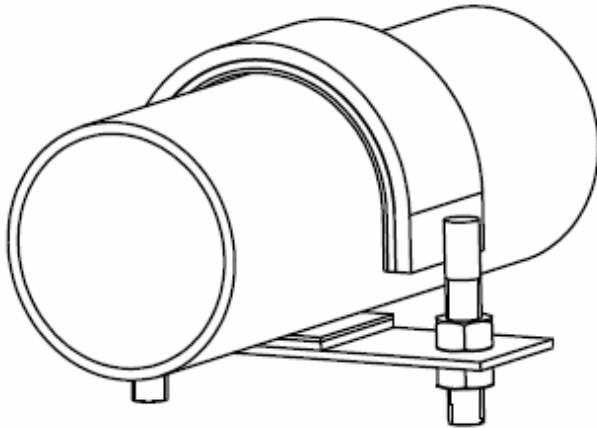




# INSULATED U-STRAP (+100 °C) EME-A & EME-A-PT



**Prevents corrosion problems and cracking of GRE/GRP pipes.** The clamp Lining eliminates corrosion problems due to electro-lytic action between dissimilar metals of pipe and pipe clamp. Due to larger contact surface with the pipe than u-bolts, the u-strap is better suitable for higher loads. The clamp lining prevents cracking of the GRE/GRP pipe during installation, also see EME-AG and EME-AG-PT datasheets for u-straps supplied with wear saddle type EME-WP

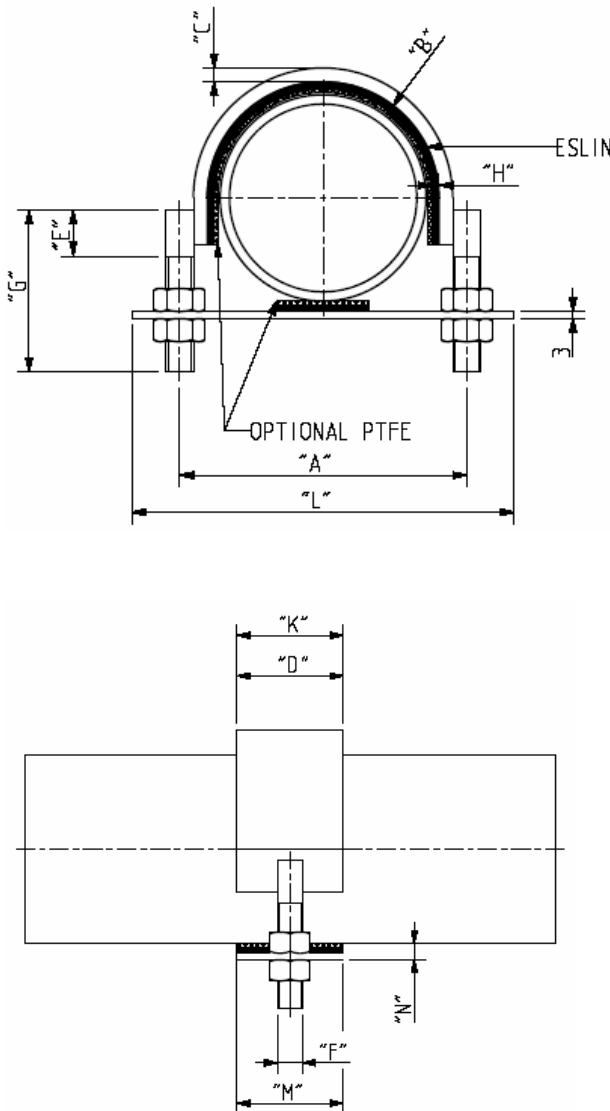
**Fields of application:** Offshore and onshore piping, shipbuilding, chemical & petrochemical industries, gas distribution systems, LPG and LNG plants, FPSO.

**Material:** Eslin clamp lining; carbon steel or stainless steel u-strap. Standard temperature range -30 up to +100 °C.

**Grip & Guide.** Standard grip version, but also available with optional PTFE surface on clamp lining to provide a guide function.

## Pipes

Standard EME-A & EME-PT is suitable for CS & SS pipes



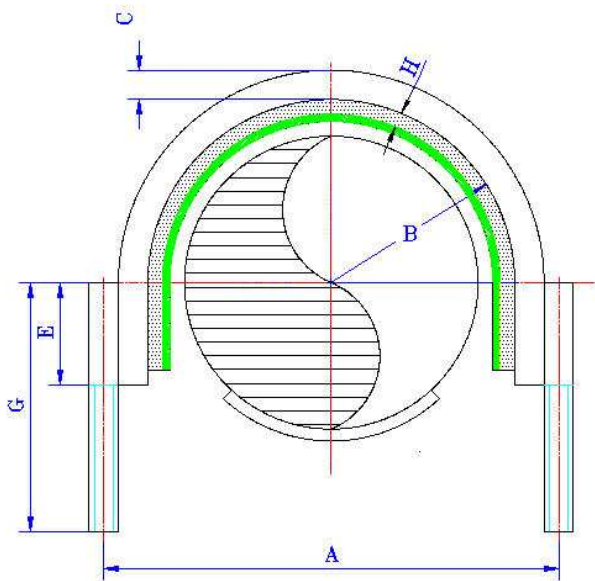
GRIP Part Number	NPS	'A'	'D'	'F'	'G'	GUIDE Part Number
EME-A-1	1"	62	50	M10	70	EME-A-PT-1
EME-A-1½	1½"	80	50	M10	75	EME-A-PT-1 ½
EME-A-2	2"	92	50	M10	80	EME-A-PT-2
EME-A-2½	2½"	107	50	M12	100	EME-A-PT-2 ½
EME-A-3	3"	124	50	M12	100	EME-A-PT-3
EME-A-4	4"	148	50	M12	120	EME-A-PT-4
EME-A-5	5"	175	50	M12	130	EME-A-PT-5
EME-A-6	6"	206	50	M16	155	EME-A-PT-6
EME-A-8	8"	258	50	M16	180	EME-A-PT-8
EME-A-10	10"	322	65	M20	210	EME-A-PT-10
EME-A-12	12"	374	65	M20	245	EME-A-PT-12
EME-A-14	14"	406	65	M20	260	EME-A-PT-14
EME-A-16	16"	460	75	M20	285	EME-A-PT-16
EME-A-18	18"	516	75	M24	320	EME-A-PT-18
EME-A-20	20"	566	75	M24	345	EME-A-PT-20
EME-A-24	24"	668	75	M24	400	EME-A-PT-24

Other sizes or thicknesses upon request

Issue 2008



# INSULATED U-STRAP for GRE/GRP EME-AGR & EME-AGR-PT (+100 °C)

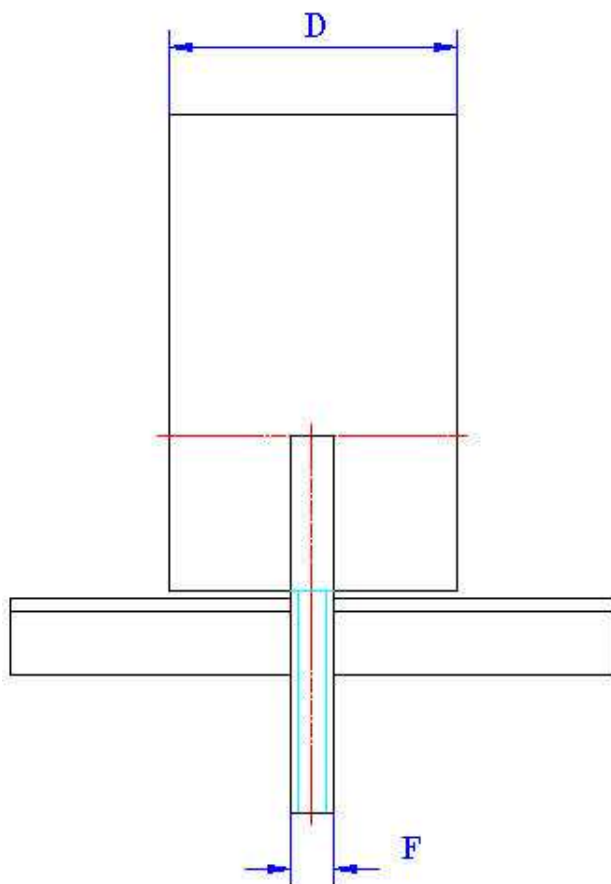


## Prevents cracking of GRE/GRP pipes.

Due to larger contact surface with the pipe than u-bolts, the u-strap is better suitable for higher loads. The clamp lining prevents cracking of the GRE/GRP pipe during installation and it is supplied with a GRE/GRP wear pad (see separate datasheet EME-WP)

**Fields of application:** Offshore and onshore piping, shipbuilding, chemical and petrochemical industries, gas distribution systems, LPG and LNG plants, FPSO.

**Material:** Eslin clamp lining; carbon steel or stainless steel u-strap. Standard temperature range -30 up to +100 °C.



**Grip & Guide.** Standard grip version (EME-AGR), but also available with optional PTFE surface on clamp lining to provide a guide function (EME-AGR-PT).

## Pipes

2" - 24" FIBERBOND 20FR-EC

2"- 12" FIBERBOND 20JF-C

Other sizes or thicknesses upon request

Issue 2008