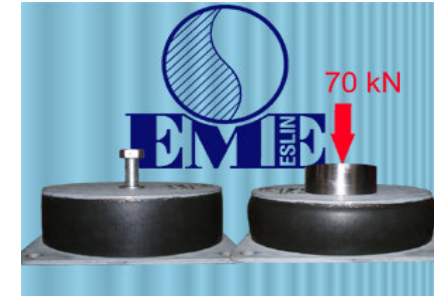
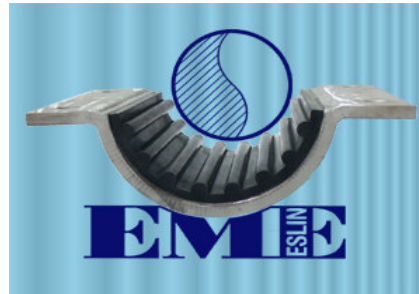


PIPE SUPPORTS, ESLIN ANTI-NOISE & ANTI-VIBRATION SUPPORTING STUDBOLTS & FLANGE INSULATION

issue 2008A



Esmat Engineering BV is an engineering and manufacturing company which produces the Eslin special flexible pipe support equipment. Our primary objective is to satisfy the client's requirements for innovative, safe and cost-effective mounting designs, together with a "fit-for-purpose" solution. Because the total cost for the owner of a plant has more cost components than purchasing price only.

To contact Esmat Engineering BV

Office address: Koperweg 17
8251 KA Dronten
The Netherlands

Phone + 31 (0)321 33 88 45
Fax + 31 (0)321 38 04 91

Mail address: Koperweg 17
8251 KA Dronten
The Netherlands

E-mail: info@esmat.net

Internet: www.esmat.net

Sales: Edwin R. Sliker

edwin@esmat.net

*Please contact us for
detailed product datasheets*



Total cost includes mounting, dismounting time and failure cost

Following cost components are to be considered over the years:

- 1) Purchase price of the product
- 2) Mounting time, labour cost and scaffolding equipment
- 3) Possible restrictions of hot work maintenance windows
- 4) Additional work after welding, such as recoating
- 5) Dismounting time
- 6) Failure cost when not applying a flexible backing, noise reduction or corrosive protection

Practical benefits of Eslin elastomer

- 1) The Eslin elastomer absorbs practically no water
- 2) Eslin is based upon a polyurethane compound, which is known for high oil and wear resistancy
- 3) Eslin is flame retardant
- 4) Eslin can be vulcanised to steel and PTFE, which makes for a high quality junction
- 5) Eslin is processed using a cold vulcanisation process. This means that we can offer small runs which have the advantages of a vulcanised product, without the extra cost of expensive moulds.

Pictorial index and overview of applications & characteristics

The next sheets provide a pictorial index, detailed datasheets are available upon request or can (in some cases) be downloaded from www.esmat.net

Listed product types:

Slide plates and bearing
Pipe grips
Linings
Resilient pads
Miscellaneous
Clamped shoes and pipe hanger
High temperature pipe supports
Anti-corrosion supporting products

Listed characteristics:

Typical application
Suitable pipe type
Preventing or reducing
Mounting method
Maintenance
Characteristics

Other catalogues:

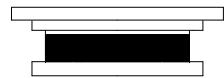
Studbolts
Flange insulation
Beam clamp systems
Spring supports

*** PRODUCT GROUP: SLIDE PLATES and BEARINGS ***



Esmat Engineering BV - Dronten, NL
 Ph. +31(0)321 338845 - Fax +31 (0)321 380491
 www.esmat.net

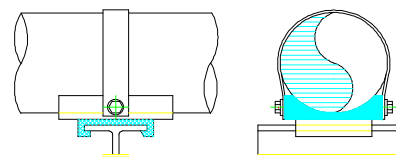
EME Part no.	TYPICAL APPLICATION				SUITABLE PIPE			PREVENTING or REDUCING						MOUNTING				MAINTENANCE			CHARACTERISTICS				
	offshore	onshore	pipe movements		CS & SS	Copper & CuNi	GRP	noise	vibration	peak forces	high shear load	misalign-ment	(electrolytic) corrosion	welding	bolting	glueing	clipping	hot work window required	re-coating beam after installation	easy to replace	low friction	flexible at cryogenic temp.	temp. range (°C)	standard height (mm)	max. compressive stress (MPa)
SB-100	✓	✓		✓	✓	✓	✓	✓	✓	✓	✓	✓	✓	✓				✓	✓		✓	✓	-20 to 100	38	7
SB-110	✓	✓		✓	✓	✓	✓	✓	✓	✓	✓	✓	✓	✓				✓	✓		✓	✓	-40 to 100	21	7
SB-150	✓	✓		✓	✓	✓	✓	✓	✓	✓	✓	✓	✓	✓				✓	✓		✓	✓	-20 to 80	20	7
SB-200	✓	✓		✓	✓	✓	✓	✓	✓	✓	✓	✓	✓	✓				✓	✓		✓	✓	-70 to 100	63	7
SB-300	✓	✓		✓	✓	✓	✓	✓	✓	✓	✓	✓	✓	✓				✓	✓		✓	✓	-30 to 80	13	7
SB-400	✓	✓		✓	✓	✓	✓	✓	✓	✓	✓	✓	✓	✓				✓	✓		✓	✓	-20 to 80	max. 8"	2
SB-500	✓	✓		✓	✓	✓	✓	✓	✓	✓	✓	✓	✓		✓					✓	✓	✓	-20 to 80	10	0,15
SB-600	✓		✓		✓	✓	✓	✓	✓	✓	✓	✓	✓			✓				✓	✓	✓	-20 to 80	30	2
SB-800	✓	✓		✓	✓	✓	✓	✓	✓	✓	✓	✓	✓		✓					✓	✓	✓	-20 to 80	max. 42"	2
SB-800BP		✓		✓	✓	✓	✓	✓	✓	✓	✓	✓	✓	✓				✓	✓		✓	✓	-20 to 80	max. 42"	2
BS	✓	✓	✓		✓	✓	✓	✓	✓	✓	✓	✓	✓			✓				✓	✓	✓	-30 to 80	10	2
BS-L	✓	✓	✓		✓	✓	✓	✓	✓	✓	✓	✓	✓			✓				✓	✓	✓	-30 to 80	10	98 N/mm
ESB-W		✓		✓	✓	✓	✓					✓	✓	✓					✓		✓	✓	-20 to 150	10-17	10
ESB-B		✓		✓	✓	✓	✓					✓	✓	✓						✓	✓	✓	-20 to 150	22	10
ES		✓	✓	✓	✓	✓	✓					✓	✓		✓								-20 to 250	5-10	15



EME-SB-100 and EME-SB-110



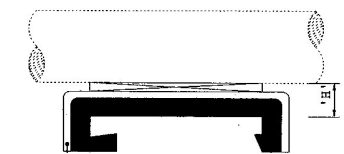
EME-SB-300



EME-SB-600



EME-BS as top part



EME-BS-L



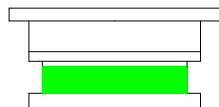
EME-SB-150



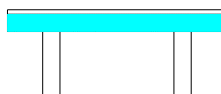
EME-SB-400 and EME-SB-800BP



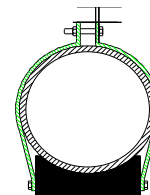
EME-BS as bottom part



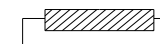
EME-SB-200



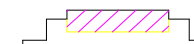
EME-SB-500



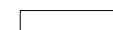
EME-SB-800



EME-ESB-W



EME-ESB-B



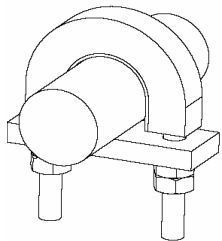
EME-ES

*** PRODUCT GROUP: PIPE GRIPS ***

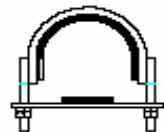


Esmat Engineering BV - Dronten, NL
 Ph. +31(0)321 338845 - Fax +31 (0)321 380491
 www.esmat.net

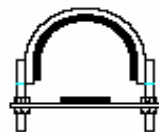
EME Part no.	TYPICAL APPLICATION				SUITABLE PIPE			PREVENTING or REDUCING						MOUNTING				MAINTENANCE			CHARACTERISTICS					
	offshore	onshore	pipe movements		CS & SS	Copper & CuNi	GRP	noise	vibration	peak forces	high shear load	misalign-ment	(electrolytic) corrosion	welding	bolting	glueing	clipping	hot work window required	re-coating beam after installation	easy to replace	low friction	flexible at cryogenic temp.	maximum temp. range (°C)	resisting greases and oils	standard size	standard steel type
30	✓	✓	✓		✓	✓	✓	✓	✓	✓			✓		✓					✓		✓	-80 to 300	✓	1/2" - 12"	RSt 37-2
31	✓	✓		✓	✓	✓	✓	✓	✓	✓			✓		✓					✓	✓	✓	-80 to 300	✓	1/2" - 12"	RSt 37-2
40	✓	✓	✓		✓	✓	✓	✓	✓	✓			✓		✓					✓		✓	-80 to 300	✓	1/2" - 8"	RSt 37-2
41	✓	✓		✓	✓	✓	✓	✓	✓	✓			✓		✓					✓	✓	✓	-80 to 300	✓	1/2" - 8"	RSt 37-2
50	✓	✓	✓		✓	✓	✓	✓	✓	✓			✓		✓					✓		✓	-80 to 100	✓	1/2" - 8"	RSt 37-2
51	✓	✓		✓	✓	✓	✓	✓	✓	✓			✓		✓					✓	✓	✓	-80 to 100	✓	1/2" - 8"	RSt 37-2
60	✓	✓	✓		✓	✓	✓	✓	✓	✓			✓		✓					✓		✓	-80 to 100	✓	1/2" - 8"	RSt 37-2
61	✓	✓		✓	✓	✓	✓	✓	✓	✓			✓		✓					✓	✓	✓	-80 to 100	✓	1/2" - 8"	RSt 37-2
70	✓	✓	✓		✓	✓	✓	✓	✓	✓			✓		✓					✓		✓	-80 to 100	✓	1/2" - 8"	RSt 37-2
71	✓	✓		✓	✓	✓	✓	✓	✓	✓			✓		✓					✓	✓	✓	-80 to 100	✓	1/2" - 8"	RSt 37-2
A	✓	✓	✓		✓	✓	✓	✓	✓	✓			✓		✓					✓		✓	-80 to 100	✓	1" - 24"	RSt 37-2
A-PT	✓	✓		✓	✓	✓	✓	✓	✓	✓			✓		✓					✓	✓	✓	-80 to 100	✓	1" - 24"	RSt 37-2
UB-NC	✓	✓	✓		✓	✓	✓								✓					✓			-30 to 100	✓	1 1/2" - 12"	RSt 37-2
UB113	✓	✓	✓		✓	✓	✓								✓					✓			-30 to 300	✓	1/2" - 16"	RSt 37-2
PB	✓	✓	✓		✓	✓	✓	✓	✓	✓			✓		✓					✓		✓	-150 to 100	✓	3/8" - 8"	RSt 37-2
PB-PT	✓	✓		✓	✓	✓	✓	✓	✓	✓			✓		✓					✓	✓	✓	-150 to 100	✓	3/8" - 8"	RSt 37-2
MPB	✓		✓		✓	✓	✓	✓	✓	✓			✓		✓					✓		✓	-80 to 100	✓	6 - 49 mm	RSt 37-2



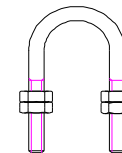
EME-30
 EME-40
 EME-50
 EME-60
 EME-70



EME-A



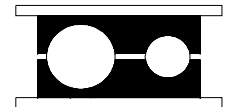
EME-A-PT



EME-UB113
 EME-UB-NC



EME-PB and
 EME-PB-PT



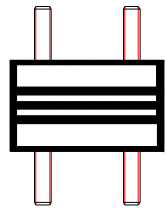
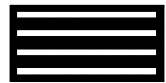
EME-MPB

*** PRODUCT GROUP: RESILIENT PADS ***



Esmat Engineering BV - Dronten, NL
 Ph. +31(0)321 338845 - Fax +31 (0)321 380491
 www.esmat.net

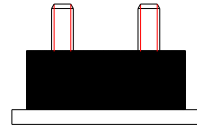
EME Part no.	TYPICAL APPLICATION				SUITABLE PIPE			PREVENTING or REDUCING						MOUNTING				MAINTENANCE			CHARACTERISTICS					
	offshore	onshore	pipe movements		CS & SS	Copper & CuNi	GRP	noise	vibration	peak forces	high shear load	misalign-ment	(electrolytic) corrosion	welding	bolting	glueing	clipping	hot work window required	re-coating beam after installation	easy to replace	flexible at cryogenic temp.	maximum temp. range (°C)	resisting greases and oils	standard height (mm)	standard steel type	max. compressive stress (MPa)
BP	✓		✓	✓	✓	✓	✓	✓	✓	✓		✓	✓				✓		✓	✓	-50 to 80	✓	30 - 250	RSt 37-2	15	
IPS	✓		✓		✓	✓	✓	✓	✓			✓	✓			✓			✓	✓	-30 to 80	✓	10	RSt 37-2	2	
CB	✓	✓	✓	✓	✓	✓	✓	✓	✓			✓	✓	✓							-150 to 80	✓	50	RSt 37-2	3,5	
B70	✓	✓	✓	✓	✓	✓	✓	✓	✓			✓	✓	✓							-50 to 80	✓	50	RSt 37-2	3,5	
B300	✓	✓	✓	✓	✓	✓	✓	✓	✓			✓	✓	✓							-50 to 300	✓	75	RSt 37-2	2	
B600	✓	✓	✓	✓	✓	✓	✓	✓	✓			✓	✓	✓							-50 to 600	✓	100	RSt 37-2	2	
ACIS	✓	✓	✓	✓	✓	✓	✓	✓	✓			✓	✓	✓							-150 to 80	✓	75	RSt 37-2	3,5	
AI	✓	✓	✓	✓	✓	✓	✓	✓	✓			✓	✓	✓				✓	✓		-50 to 80	✓	75	RSt 37-2	10	
AU	✓	✓	✓	✓	✓	✓	✓	✓	✓			✓	✓	✓				✓			-50 to 80	✓	50	RSt 37-2	10	
FL	✓	✓	✓		✓	✓	✓	✓	✓			✓	✓				✓				-80 to 80	✓	10	N/A	0,35	



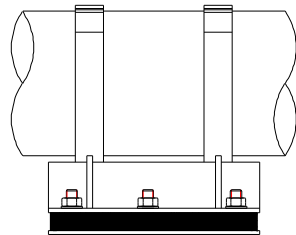
EME-BP



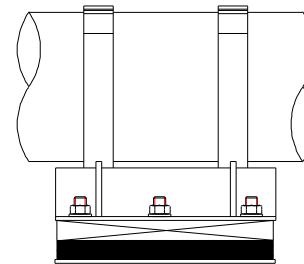
EME-IPS



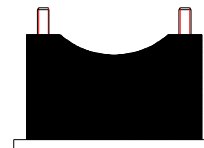
EME-CB



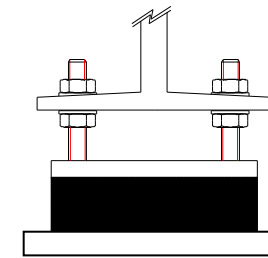
EME-B70



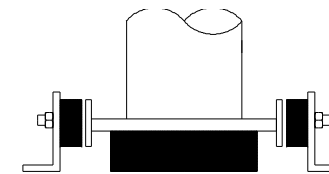
EME-B300
EME-B600



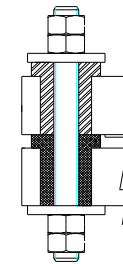
EME-ACIS



EME-AI



EME-AU



EME-FL
Flange bush shown in mounted position

*** PRODUCT GROUP: LININGS ***



Esmat Engineering BV - Dronten, NL
 Ph. +31(0)321 338845 - Fax +31 (0)321 380491
 www.esmat.net

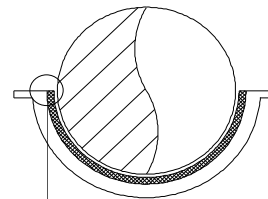
EME Part no.	TYPICAL APPLICATION				SUITABLE PIPE			PREVENTING or REDUCING						MOUNTING				MAINTENANCE			CHARACTERISTICS					
	offshore	onshore	pipe movements		CS & SS	Copper & CuNi	GRP	noise	vibration	peak forces	high shear load	misalign-ment	(electrolytic) corrosion	welding	bolting	glueing	clipping	hot work window required	re-coating beam after installation	easy to replace	low friction	flexible at cryogenic temp.	temp. range (°C)	resisting greases and oils	standard height (mm)	max. compressive stress (MPa)
CL	✓	✓	✓		✓	✓	✓	✓	✓				✓				✓			✓		✓	-80 to 100	✓	3	0,35
CL-PT	✓	✓		✓	✓	✓	✓	✓	✓				✓				✓			✓	✓	✓	-80 to 100	✓	4	0,35
CL-HT150G	✓	✓	✓		✓	✓	✓	✓	✓				✓				✓			✓	✓	✓	-30 to 150	✓	3	0,35
CL-HT150PT	✓	✓	✓		✓	✓	✓	✓	✓				✓				✓			✓	✓	✓	-30 to 150	✓	4	0,35
CL-HT200G	✓	✓	✓		✓	✓	✓	✓	✓				✓				✓			✓	✓	✓	-30 to 200	✓	3	0,35
CL-HT350G	✓	✓	✓		✓	✓	✓	✓	✓				✓				✓			✓	✓	✓	-30 to 350	✓	3	0,35
RCL	✓		✓		✓	✓	✓	✓	✓	✓			✓		✓					✓	✓	✓	-80 to 100	✓	25	0,35
RCL-PT	✓			✓	✓	✓	✓	✓	✓	✓			✓		✓					✓	✓	✓	-80 to 100	✓	25	0,35
PC-32	✓	✓	✓		✓	✓	✓	✓	✓				✓				✓			✓	✓	✓	-80 to 100	✓	25	0,35
PC-34	✓	✓	✓		✓	✓	✓	✓	✓				✓		✓					✓	✓	✓	-80 to 100	✓	25	0,35
WCL	✓	✓	✓		✓	✓	✓	✓	✓				✓				✓			✓	✓	✓	-50 to 200	✓	3	0,35



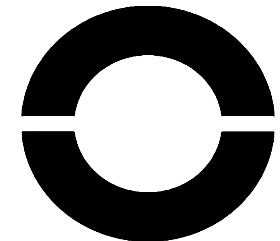
EME-CL



EME-RCL and
EME-RCL-PT



1% tolerance of diameter 1000 mm, makes 50% tolerance for 20 mm thick lining. Therefore it is better to vulcanize the lining into the riser clamp and eliminating the 50% tolerance, so not glueing a standard rubber sheet which will copy the 50% tolerance



EME-PC32 and
EME-PC34



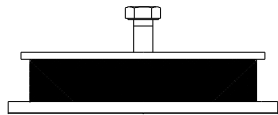
EME-CL-PT
EME-CL-HT150G
EME-CL-HT150PT
EME-CL-HT200G
EME-CL-HT350G

*** PRODUCT GROUP: MISCELLANEOUS ***

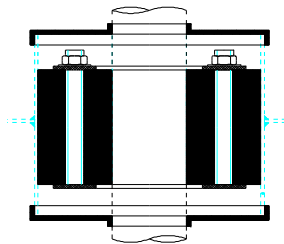


Esmat Engineering BV - Dronten, NL
 Ph. +31(0)321 338845 - Fax +31 (0)321 380491
 www.esmat.net

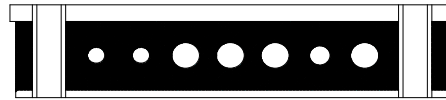
EME Part no.	TYPICAL APPLICATION				SUITABLE PIPE			PREVENTING or REDUCING						MOUNTING				MAINTENANCE			CHARACTERISTICS					
	offshore	onshore	pipe movements		CS & SS	Copper & CuNi	GRP	noise	vibration	peak forces	high shear load	misalign-ment	(electrolytic) corrosion	welding	bolting	glueing	clipping	hot work window required	re-coating beam after installation	easy to replace	flexible at cryogenic temp.	temp. range (°C)	resisting greases and oils	standard height (mm)	max. size	standard steel type
SA	✓							✓	✓	✓			✓							✓	-30 to 80	✓	100	120 kN	RSt 37-2	
DP																					✓	-80 to 80	✓	55 - 125	12"	RSt 37-2
AMP-B	✓	✓			✓	✓	✓	✓	✓				✓							✓	-80 to 80	✓	40 - 66	OD 42	RSt 37-2	
AMP-W																					✓	-80 to 80	✓	50 - 85	OD 42	RSt 37-2
NIT	✓	✓			✓	✓	✓	✓	✓						✓						✓	-30 to 80	✓	N/A		RSt 37-2
SD																					✓	-30 to 80	✓	N/A		RSt 37-2



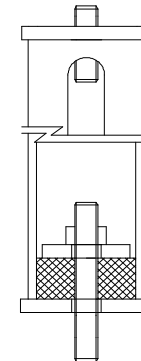
EME-SA
"Shock Absorber"



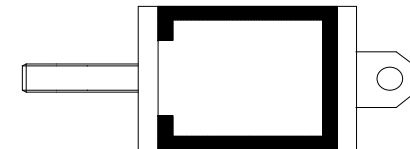
EME-DP
"Deck/wall penetration"



EME-AMP-B and
EME-AMP-W
"Acoustic Multi Pipe Blocks"



EME-NIT
"Noise Insulating
Turnbuckle"



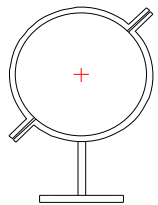
EME-SD
"Shock Dampener"

*** PRODUCT GROUP: CLAMPED SHOES and PIPE HANGER ***

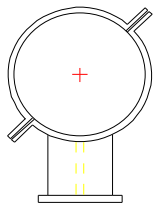


Esmat Engineering BV - Dronten, NL
 Ph. +31(0)321 338845 - Fax +31 (0)321 380491
 www.esmat.net

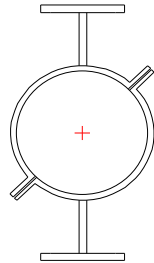
EME Part no.	TYPICAL APPLICATION				SUITABLE PIPE			PREVENTING or REDUCING						MOUNTING				MAINTENANCE			CHARACTERISTICS				
	offshore	onshore	pipe movements		CS & SS	Copper & CuNi	GRP	noise	vibration	peak forces	high shear load	misalign-ment	(electrolytic) corrosion	welding	bolting	glueing	clipping	hot work window required	re-coating beam after installation	easy to replace	standard steel type	other types possible	temp. range (°C)	resisting greases and oils	standard size (mm)
CS-1	✓		✓	✓	✓	✓	✓								✓						RSt 37-2	✓	-30 to 300	✓	2"-24"
CS-2	✓	✓	✓	✓	✓	✓	✓								✓						RSt 37-2	✓	-30 to 300	✓	2"-24"
CSD-1	✓	✓	✓	✓	✓	✓	✓								✓						RSt 37-2	✓	-30 to 300	✓	2"-24"
CSD-2	✓	✓	✓	✓	✓	✓	✓								✓						RSt 37-2	✓	-30 to 300	✓	2"-24"
CSF-1	✓	✓	✓	✓	✓	✓	✓								✓						RSt 37-2	✓	-30 to 300	✓	2"-24"
CSF-2	✓	✓	✓	✓	✓	✓	✓								✓						RSt 37-2	✓	-30 to 300	✓	2"-24"
CSL-1	✓	✓	✓		✓	✓	✓	✓	✓				✓		✓						RSt 37-2	✓	-30 to 80	✓	2"-24"
CSL-2	✓	✓	✓		✓	✓	✓	✓	✓				✓		✓						RSt 37-2	✓	-30 to 80	✓	2"-24"
CSDL-1	✓	✓	✓		✓	✓	✓	✓	✓				✓		✓						RSt 37-2	✓	-30 to 80	✓	2"-24"
CSDL-2	✓	✓	✓		✓	✓	✓	✓	✓				✓		✓						RSt 37-2	✓	-30 to 80	✓	2"-24"
CSFL-1	✓	✓	✓		✓	✓	✓	✓	✓				✓		✓						RSt 37-2	✓	-30 to 80	✓	2"-24"
CSFL-2	✓	✓	✓		✓	✓	✓	✓	✓				✓		✓						RSt 37-2	✓	-30 to 80	✓	2"-24"
PH	✓	✓			✓	✓	✓								✓						RSt 37-2	✓	-30 to 300	✓	2"-24"



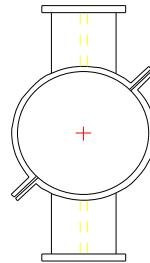
EME-CS-1
EME-CSL-1



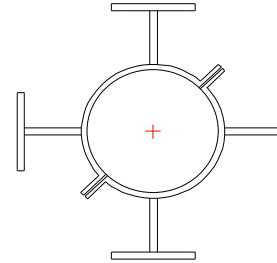
EME-CS-2
EME-CSL-2



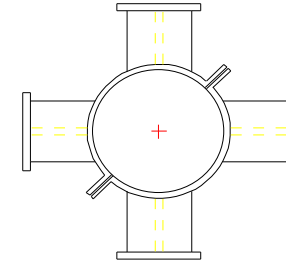
EME-CSD-1
EME-CSDL-1



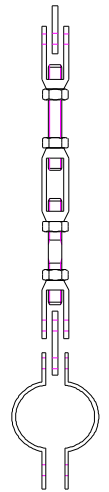
EME-CSD-2
EME-CSDL-2



EME-CSF-1
EME-CSFL-1



EME-CSF-2
EME-CSFL-2



EME-PH

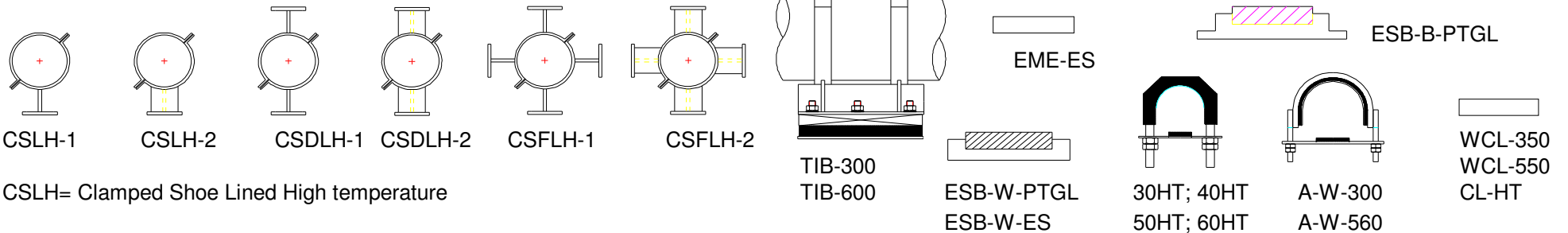
type CS is Clamped Shoe ; type CSL is Clamped Shoe Lined

*** PRODUCT GROUP: HIGH TEMPERATURE PRODUCTS ***



Esmat Engineering BV - Dronten, NL
 Ph. +31(0)321 338845 - Fax +31 (0)321 380491
 www.esmat.net

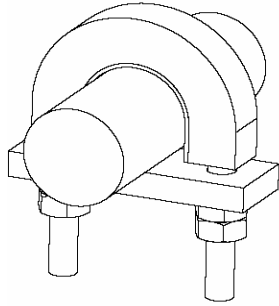
EME Part no.	TYPICAL APPLICATION				PIPE		PREVENTING or REDUCING						MOUNTING				MAINTENANCE			CHARACTERISTICS				
	offshore	onshore	pipe movements		CS & SS	Copper & CuNi	noise	vibration	peak forces	high shear load	misalignment	(electrolytic) corrosion	welding	bolting	glueing	clipping	hot work window required	re-coating beam after installation	easy to replace	low friction	temp. range (°C)	resisting greases and oils	standard size or thickness	standard steel type
CSLH-1	✓		✓	no	✓	✓						✓									up to 550	✓	2 - 8"	13CrMo4-5
CSLH-2	✓	✓	✓	large	✓	✓						✓									up to 550	✓	8 - 24"	13CrMo4-5
CSDLH-1	✓	✓	✓		✓	✓						✓									up to 550	✓	2 - 8"	13CrMo4-5
CSDLH-2	✓	✓	✓		✓	✓						✓									up to 550	✓	8 - 24"	13CrMo4-5
CSFLH-1	✓	✓	✓		✓	✓						✓									up to 550	✓	2 - 8"	13CrMo4-5
CSFLH-2	✓	✓	✓		✓	✓						✓									up to 550	✓	8 - 24"	13CrMo4-5
TIB-300	✓	✓	✓		✓	✓	✓	✓		✓		✓									300	✓	2 - 24"	13CrMo4-5
TIB-600	✓	✓	✓		✓	✓	✓	✓		✓		✓									600	✓	2 - 24"	13CrMo4-5
ES	✓		✓	✓	✓	✓								✓					✓	250	✓	5 mm	N/A	
ESB-W-PTGL	✓	✓	✓	✓	✓	✓						✓					✓	✓		✓	180	✓	10 - 17 mm	RSt. 37-2
ESB-W-ES	✓	✓	✓	✓	✓	✓						✓					✓	✓		✓	250	✓	10 - 17 mm	RSt. 37-2
ESB-B-PTGL	✓	✓	✓	✓	✓	✓							✓						✓	✓	180	✓	22 mm	RSt. 37-2
50HT	✓	✓	✓		✓		✓	✓				✓								✓	350	✓	1/2" - 8"	S275J
60HT	✓	✓	✓			✓	✓					✓								✓	350	✓	1/2" - 8"	S275J
A-W-300	✓	✓	✓		✓	✓						✓								✓	300	✓	3	N/A
A-W-560	✓	✓	✓		✓	✓						✓								✓	560	✓	3	N/A
WCL-350	✓	✓	✓		✓	✓								✓							350	✓	3	N/A
WCL-550	✓	✓	✓		✓	✓						✓		✓							550	✓	3	N/A
CL-HT	✓	✓	✓		✓	✓									✓						150	✓	3	N/A



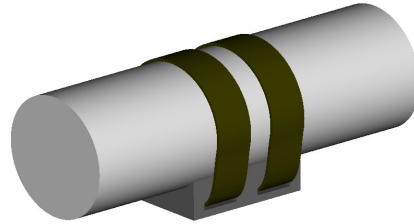
*** PRODUCT GROUP: ANTI-CORROSION INTERFACES ***



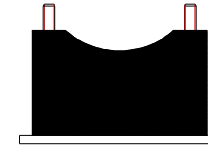
Esmat Engineering BV - Dronten, NL
Ph. +31(0)321 338845 - Fax +31 (0)321 380491
www.esmat.net



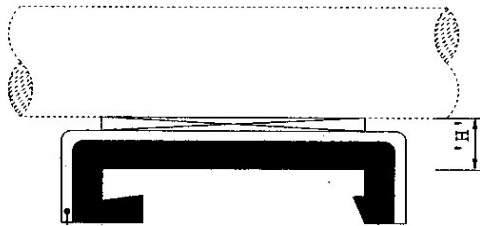
EME-30



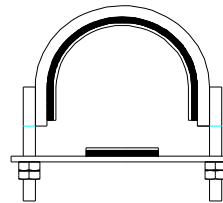
EME-SB800-2SL



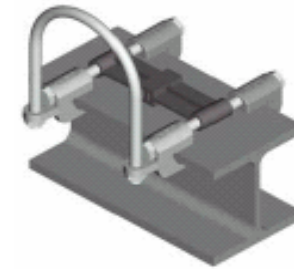
EME-SB800



EME-BS-L



EME-A



EME-BC

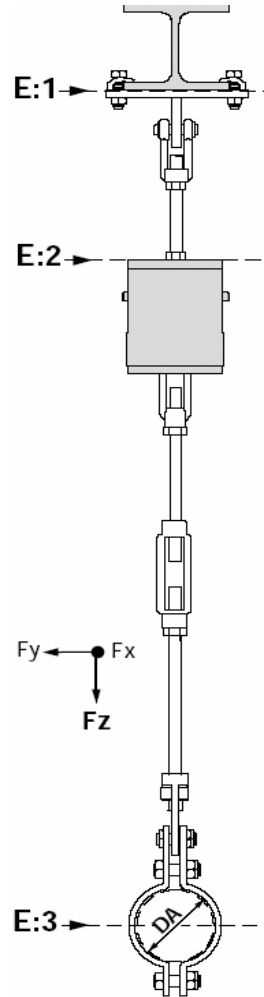


EME-CL

*** PRODUCT GROUP: SPRING HANGERS & SPRING SUPPORT ***



Esmat Engineering BV - Dronten, NL
Ph. +31(0)321 338845 - Fax +31 (0)321 380491
www.esmat.net



SPRING HANGER

LOAD RANGE: 0,19 - 241 kN

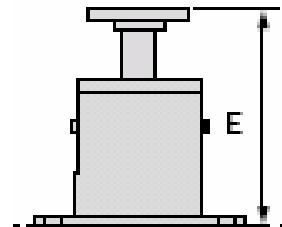
NUMBER OF LOAD RANGES: 23 GROUPS

SPRING RATE RANGE: 1,3 - 2913 N/mm

MAX. SPRING TRAVEL: 184 mm

SUBTYPES: SPRING HANGER C/W THREADED CONNECTION
SPRING HANGER PLACED UPON BEAM
DOUBLE SPRING HANGER C/W TRAVERSE

SPRING SUPPORT
SPRING SUPPORT C/W PTFE SLIDING PLATE
SPRING SUPPORT C/W OUTER GUIDE
SPRING SUPPORT C/W OUTER GUIDE & PTFE SLIDING PLATE
SPRING SUPPORT C/W SPHERICAL BEARING HEAD

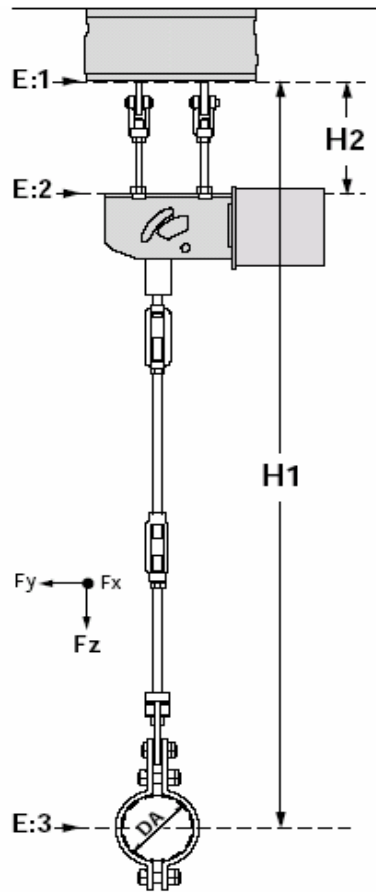


SPRING SUPPORT

*** PRODUCT GROUP: CONSTANT HANGERS & CONSTANT SUPPORT ***



Esmat Engineering BV - Dronten, NL
 Ph. +31(0)321 338845 - Fax +31 (0)321 380491
 www.esmat.net



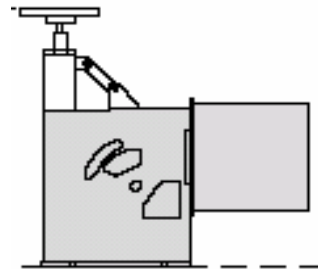
CONSTANT HANGER

MAX. LOAD RANGE: 0,08 - 412 kN

NUMBER OF LOAD RANGES: 36 GROUPS

SUBTYPES: HORIZONTAL CONSTANT HANGER C/W THREADED CONNECTION
 VERTICAL CONSTANT HANGER C/W THREADED CONNECTION
 HORIZONTAL CONSTANT HANGER PLACED UPON BEAM
 VERTICAL CONSTANT HANGER PLACED UPON BEAM
 DOUBLE CONSTANT HANGER C/W TRAVERSE

HORIZONTAL CONSTANT SUPPORT C/W GUIDE
 HORIZONTAL CONSTANT SUPPORT C/W GUIDE & PTFE SLIDING PLATE
 VERTICAL CONSTANT SUPPORT C/W GUIDE
 VERTICAL CONSTANT SUPPORT C/W GUIDE & PTFE SLIDING PLATE



CONSTANT SUPPORT

Important notice: This catalogue and the information and recommendations it contains are based on data reasonably believed to be reliable. However, such factors as variations in environment, application or installation, changes in operating procedures, or extrapolation of data may cause different results. Esmat makes no representation or warranty, express or implied, including warranties of merchantability or fitness of purpose, as to the accuracy, adequacy or completeness of the recommendations or information contained herein. Esmat assumes no liability whatsoever in connection with this catalogue or the information or recommendations it contains.